



Sony Ericsson

Working Instructions

- mechanical -



Txt pro, CK15i, CK15a



CONTENTS

1	Exterior Views.....	4
1.1	CK15i, CK15a.....	4
2	Tools	5
3	Disassembly.....	6
3.1	Lower Unit	6
3.1.1	Battery Cover	6
3.1.2	Battery	6
3.1.3	Keyboard	7
3.1.4	Rear Cover Assy.....	9
3.1.5	Cover Plastic and Main PBA Assy	10
3.2	Upper Unit.....	12
3.2.1	Battery Cover	12
3.2.2	Battery	12
3.2.3	Front Cover Assy.....	13
3.2.4	Display Shielding Assy and Upper Board Assy.....	16
4	Replacement	18
4.1	Battery Cover.....	18
4.2	Rear Cover Assy	18
4.3	Cover Plastic	18
4.4	Keyboard	18
4.5	Display Shielding Assy	19
4.6	Front Cover Assy	19
4.7	Co-Branding	20
4.8	Core Unit Label.....	22
4.9	Copper Shielding Can.....	23
4.10	Ant Main Flex Module	24
4.11	Camera Lens.....	26
4.12	Key Power.....	28
4.13	Key Volume	30
4.14	Key Camera	32
4.15	Loudspeaker.....	34
4.16	Sponge Speaker Inner	37
4.17	Liquid Intrusion Indicator	39
4.18	Sponge Speaker	41
4.19	Camera 3 Mpixel.....	42
4.20	Metal Dome keypad.....	45
4.21	Ear Speaker	47
4.22	Sponge Proximity Sensor.....	49
4.23	Hinge module	50
4.24	Conductive Gasket.....	53



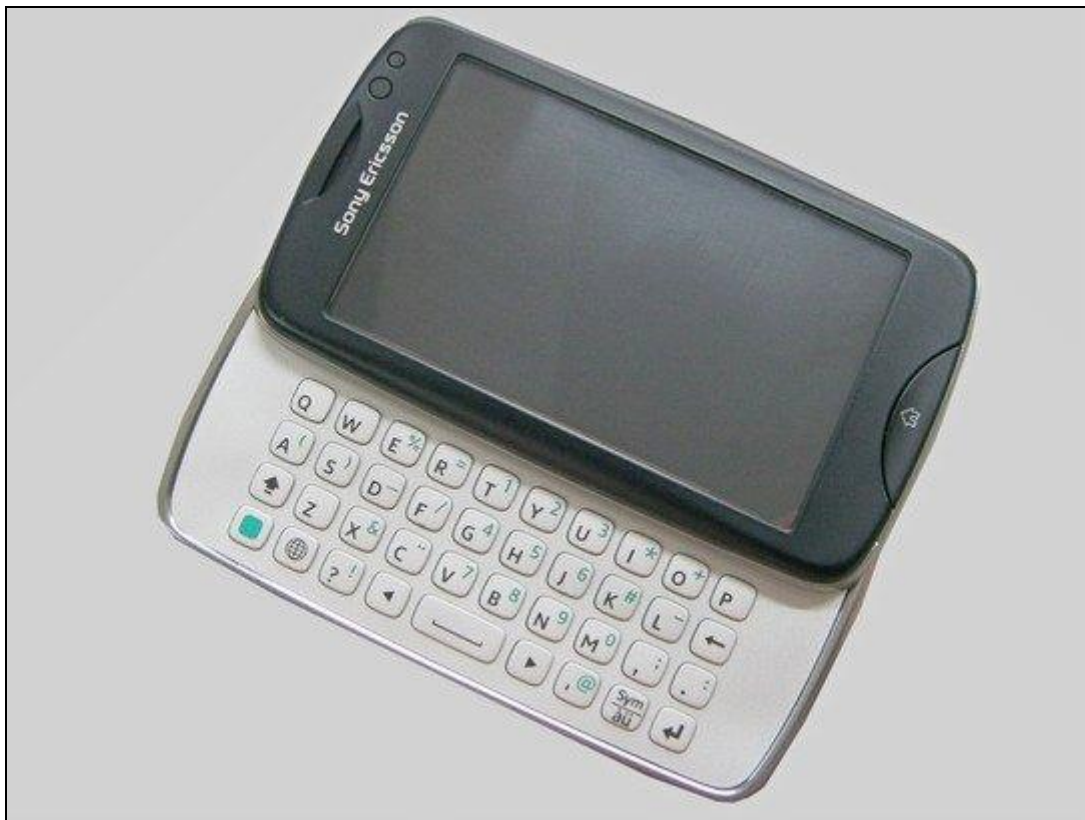
4.25 Mylar Hinge FPC.....	54
4.26 Hinge FPC Assembly	55
4.27 Conductive Tape 10*18mm.....	57
4.28 Display 3.0 inch TFT.....	58
4.29 Metal Dome Home Key (Old)	61
4.30 Mylar Home Key LED	62
4.31 Metal Dome Home Key (New)	63
4.32 Conductive Gasket 3x4x0.5mm.....	64
4.33 Conductive Tape 3.5*17.5mm.....	65
4.34 Conductive Tape 7.6*43.2mm.....	67
4.35 Sub PBA Assy	69
5 Reassembly.....	70
5.1 Upper Unit.....	70
5.1.1 Upper Board Assy and Display Shielding Assy.....	70
5.1.2 Front Cover Assy.....	71
5.1.3 Battery	76
5.1.4 Battery Cover	76
5.2 Lower Unit	78
5.2.1 Main PBA Assy and Cover Plastic	78
5.2.2 Rear Cover Assy.....	79
5.2.3 Keyboard.....	80
5.2.4 Battery	82
5.2.5 Battery Cover	82
6 Revision History	84

*For general information about mechanical repair related issues, refer to
1220-1333: Generic Repair Manual - mechanical*



1 Exterior Views

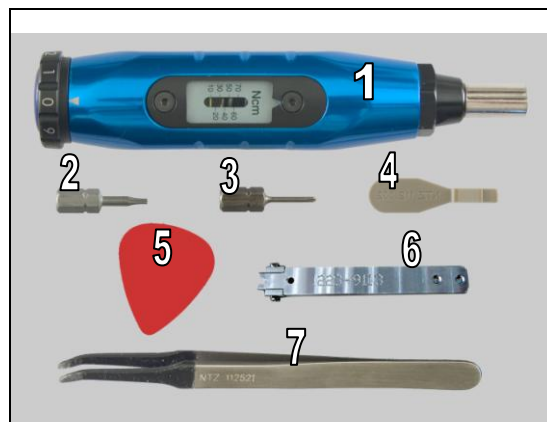
1.1 CK15i, CK15a



2 Tools

SPECIAL TOOLS

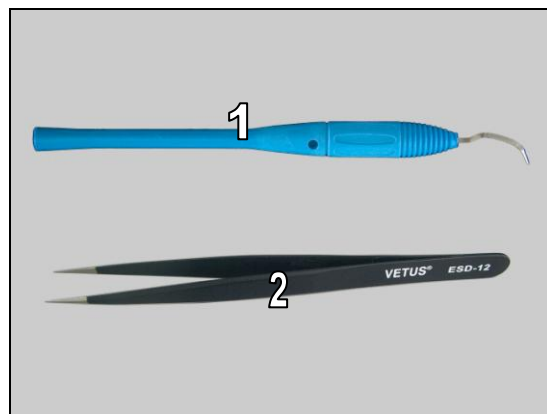
1. Torque Screwdriver
2. Bits (T5)
3. Bits (JCIS)
4. Front Opening Tool
5. Guitar Pick
6. Camera Removal Tool
7. Flex Film Assembly Tool



For part no's on the tools above, refer to the 'Tools Catalogue/Matrix'!

STANDARD TOOLS

1. Dentist hook (curve-shape)
2. Tweezers (ESD-safe & non-metallic)





3 Disassembly

3.1 Lower Unit

The disassembly is done in the following order:

1. Battery Cover
2. Battery
3. Keyboard
4. Rear Cover Assy
5. Main PBA Assy(a) and Cover Plastic(b)



3.1.1 Battery Cover

Insert the Guitar Pick to release the Battery Cover as show in picture.



Lift up the battery cover and remove it as show in picture.



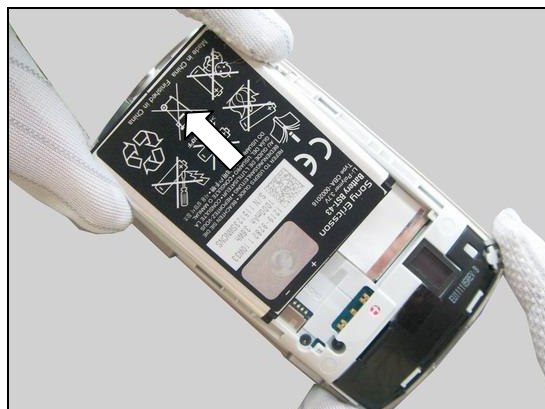
3.1.2 Battery

Insert the Front Opening Tool and release the Battery as shown in the picture.



Disassembly: Lower Unit

Raise and remove the Battery.



3.1.3 Keyboard

Remove the five Screws with the Torque Screwdriver by T5.



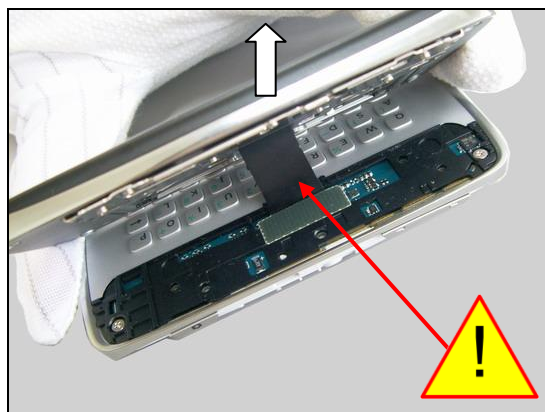
Turn over the phone.

Be careful not to separate Upper Unit and Lower Unit!



Lift up the Upper Unit at an approximate 60 degree as shown in picture.

Be careful not to damage the Hinge FPC!

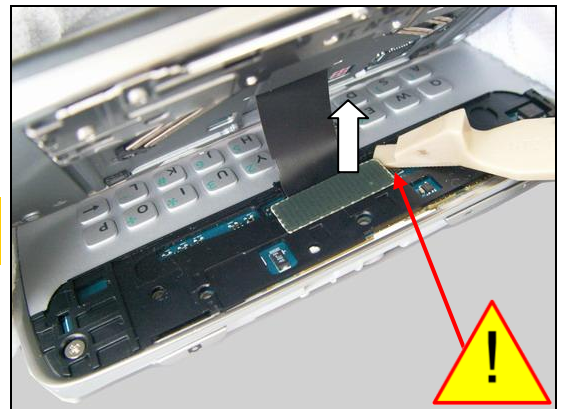




Disassembly: Lower Unit

Disconnect the Hinge FPC connector as show in picture.

Be careful not to damage the components on the Main PBA!



Separate Upper Unit and Lower Unit as shown in picture.



Insert Dentist hook at the corner as show in picture and loosen the Keyboard from the Lower Unit.



Peel off the Keyboard by using the Flex Film Assembly Tool.

Scrap! Cannot be reused!





Disassembly: Lower Unit

3.1.4 Rear Cover Assy

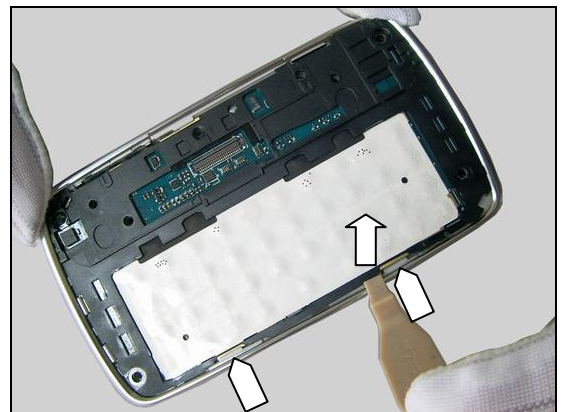
Remove the four Screws with the Torque Screwdriver by using JCIS No.0 Bits.



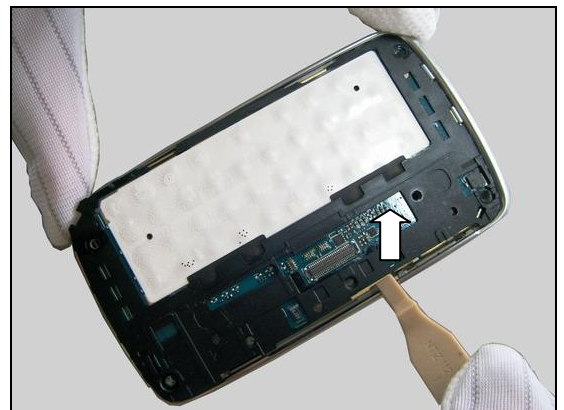
There are three hooks securing on the Rear Cover Assy.



Release these hooks as show in picture.



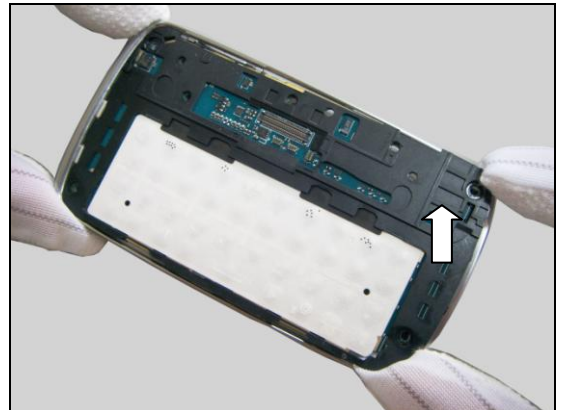
Do the same at the opposite side.



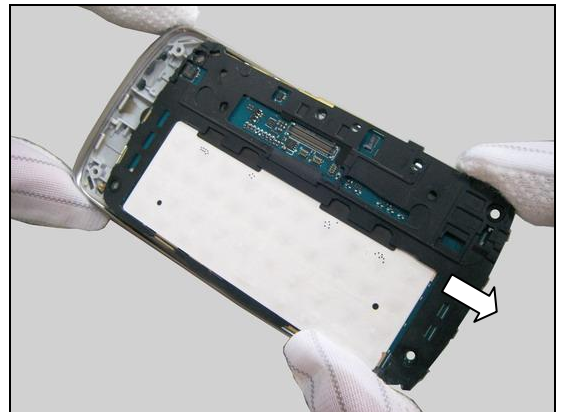
Disassembly: Lower Unit

Lift up the Main PBA Assy as shown in picture.

Be careful not to damage the Conn Audio Jack on the Main PBA!



Remove the Main PBA as shown in picture.

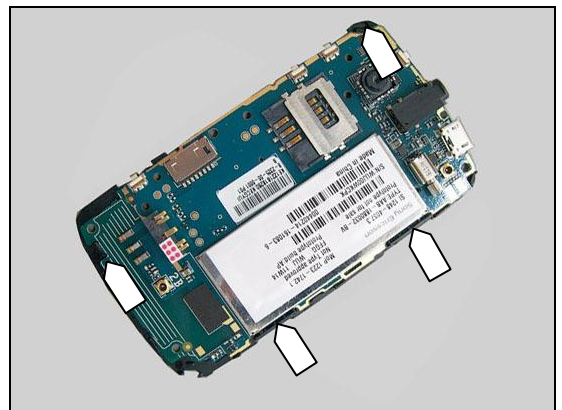


Separate the Main PBA from the Rear Cover Assy as shown in picture.



3.1.5 Cover Plastic and Main PBA Assy

There are four snap hooks securing the Cover Plastic as shown in picture.



Disassembly: Lower Unit

Release the two snap hooks of this side on the Cover Plastic.



Do the same at the opposite side.



Lift up the top of the Main PBA Assy and remove it.



Separate the Cover Plastic and Main PBA Assy as shown in picture.

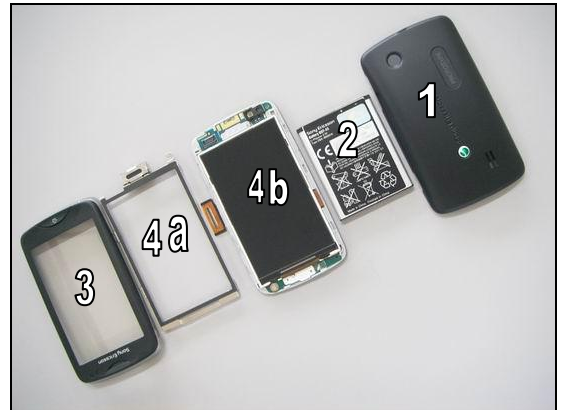


Disassembly

3.2 Upper Unit

The disassembly is done in the following order:

1. Battery Cover
2. Battery
3. Front Cover Assy
4. Display Shielding Assy(a) and Upper Board Assy(b)



3.2.1 Battery Cover

Insert the Guitar Pick to release the Battery Cover.

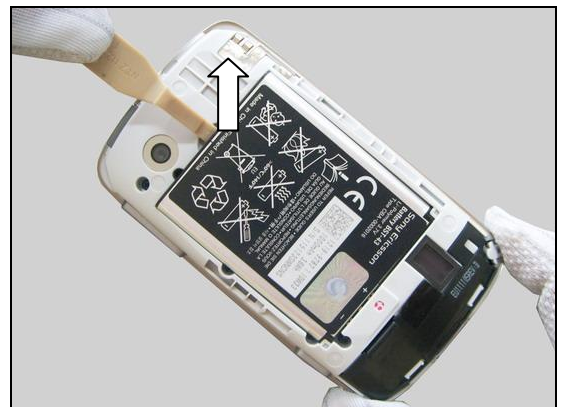


Lift up the bottom of the Battery Cover and remove it.



3.2.2 Battery

Insert the Front Opening Tool and release the Battery as shown in the picture.





Disassembly: Upper Unit

Raise and remove the Battery.



3.2.3 Front Cover Assy

Remove the five Screws with the Torque Screwdriver by T5.



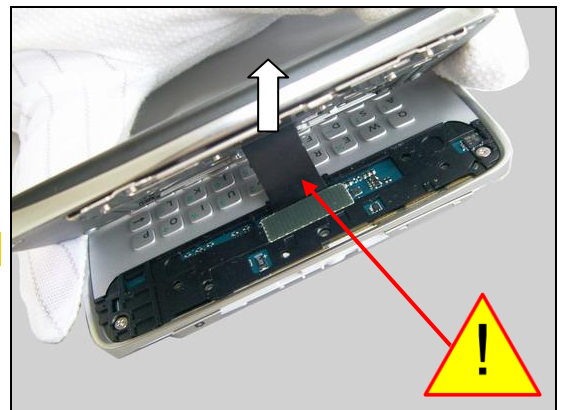
Turn over the phone.

Be careful not to separate Upper Unit and Lower Unit!



Lift up the Upper Unit at an approximate 60 degree as shown in picture.

Be careful not to damage the Hinge FPC!

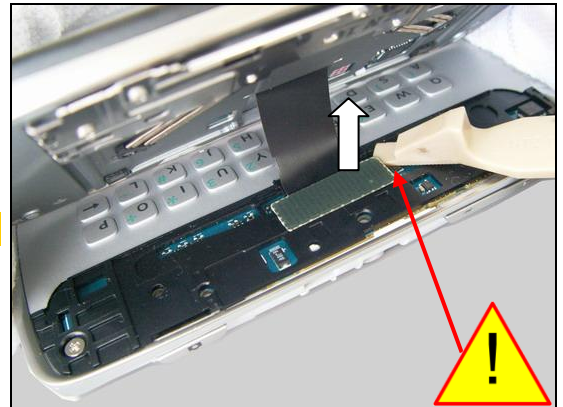




Disassembly: Upper Unit

Disconnect the Hinge FPC connector as show in picture.

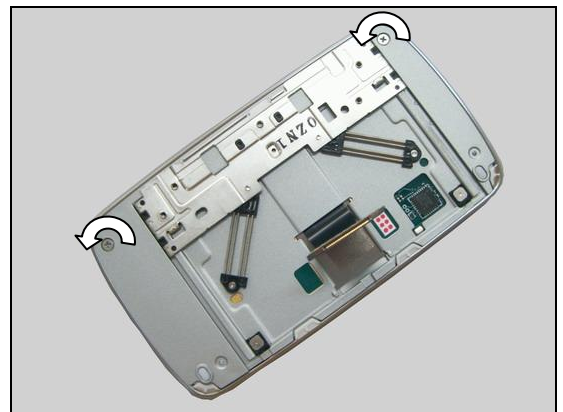
Be careful not to damage the components on Main PBA!



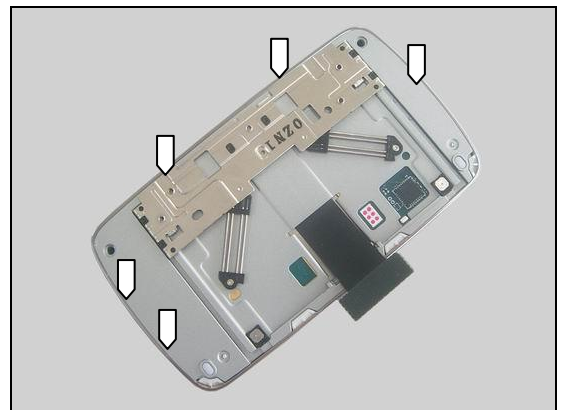
Separate the Upper Unit from Lower Unit as shown in picture.



Remove the two Screws with the Torque Screwdriver by using JCIS No.0 Bits.



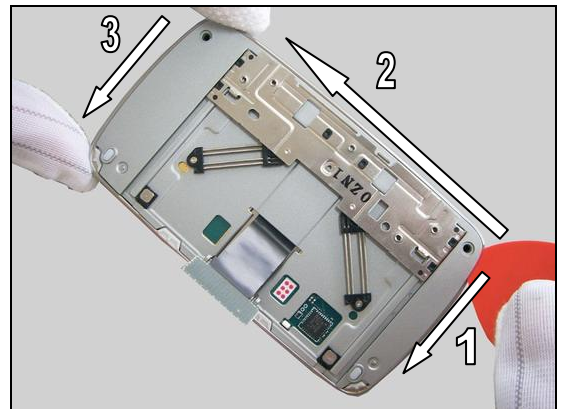
There are five hooks securing the Upper Front Cover Assy located as shown.



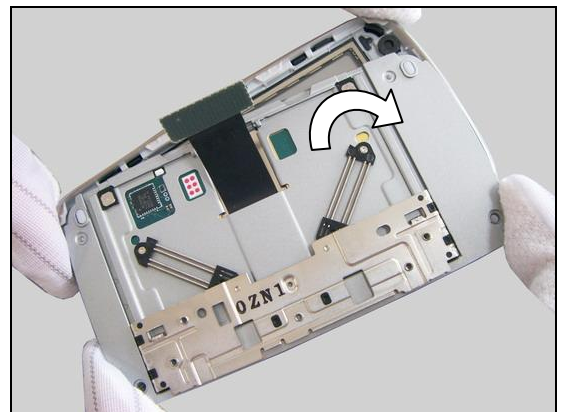


Disassembly: Upper Unit

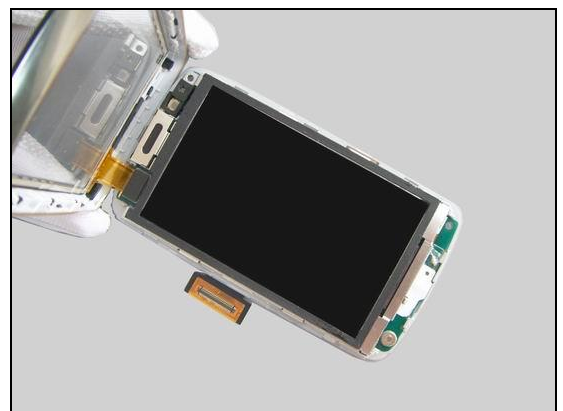
Insert the Guitar Pick and slide it to unsnap the snap hooks following the order as shown in the picture.



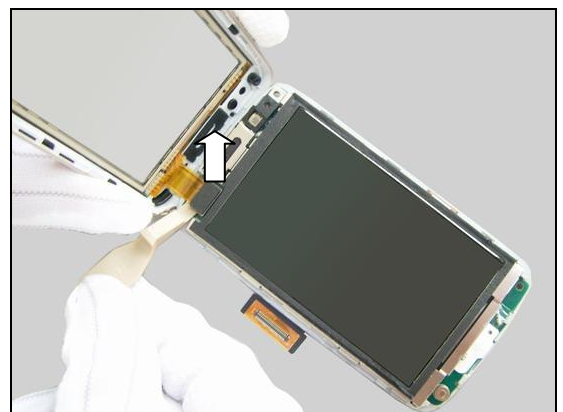
Rotate Hinge module Assy to an approximate 15 degree with Front Cover Assy as shown in the picture.



Turn over the Upper Unit and lift up the Front Cover Assy at an approximate 80 degree as shown in picture.



Disconnect the Touch Panel FPC connector by using the Front Opening Tool.





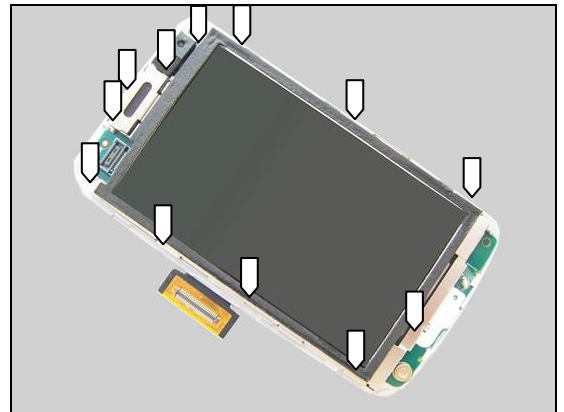
Disassembly: Upper Unit

Remove the Front Cover Assy.

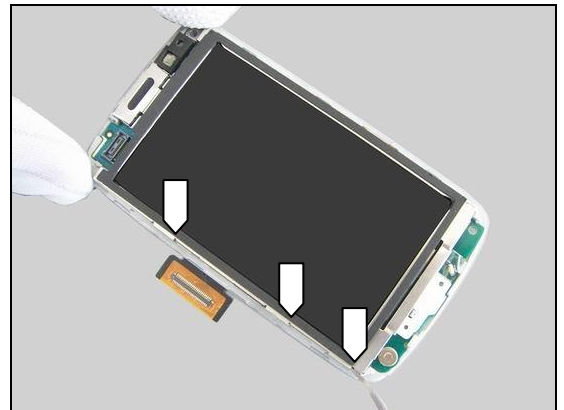


3.2.4 Display Shielding Assy and Upper Board Assy

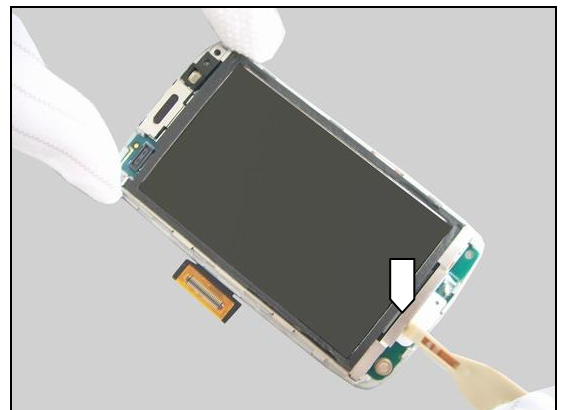
There are twelve hooks securing on the Hinge module.



Release these hooks of left side on the Hinge module by using the Dentist hook.

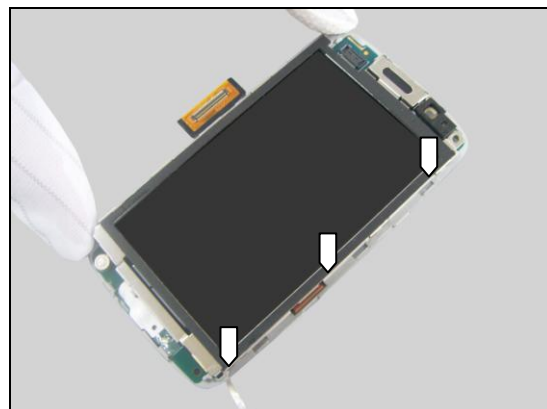


Release the hook of bottom side on the Hinge module.

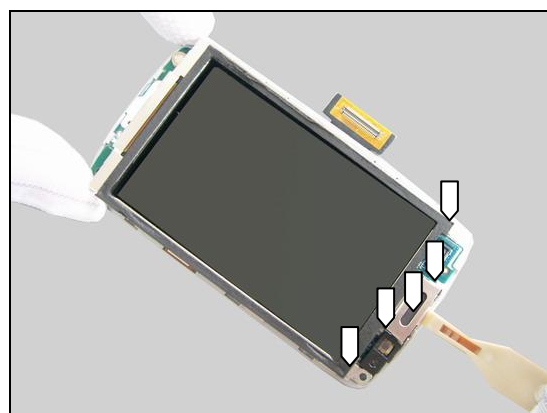


Disassembly: Upper Unit

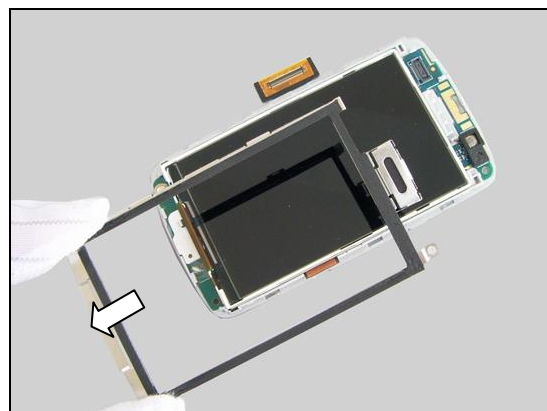
Release these hooks of right side on the Hinge module by using the Dentist hook.



Release these hooks as show in picture.



Separate the Display Shielding Assy from Upper Unit as shown in picture.





4 Replacement

4.1 Battery Cover

Follow the 3.1.1 Disassembly instructions!

Follow the 4.7 Removal Instructions!

Prepare the new Battery Cover.

Follow the 4.7 Installation Instructions!

Follow the 5.2.5 Reassembly instructions!



4.2 Rear Cover Assy

Follow the 3.1.1 – 3.1.4 Disassembly instructions!

Follow the 4.10 – 4.15 Removal Instructions!

Prepare the new Rear Cover Assy.

Follow the 4.10 – 4.15 Installation Instructions!

Follow the 5.2.2 – 5.2.5 Reassembly instructions!

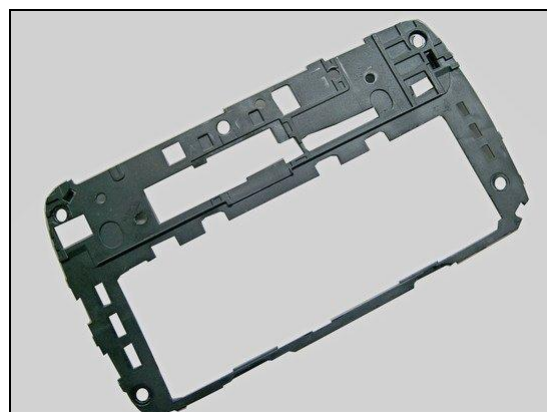


4.3 Cover Plastic

Follow the 3.1.1 – 3.1.5 Disassembly Instructions!

Prepare the new Cover Plastic.

Follow the 5.2.1– 5.2.5 Reassembly Instructions!



4.4 Keyboard

Follow the 3.1.1 – 3.1.3 Disassembly Instructions!

Prepare the new Keyboard.

Follow the 5.2.3 – 5.2.5 Reassembly Instructions!





Replacement

4.5 Display Shielding Assy

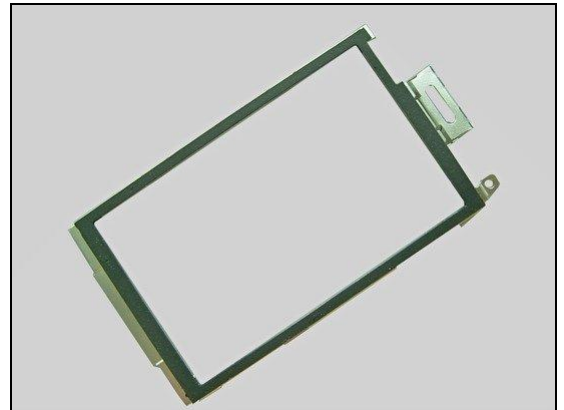
Follow the 3.2.1 – 3.2.4 Disassembly Instructions!

Follow the 4.21 Removal Instructions!

Prepare the new Display Shielding Assy.

Follow the 4.21 Installation Instructions!

Follow the 5.1.1 – 5.1.4 Reassembly Instructions!



4.6 Front Cover Assy

Follow the 3.2.1 – 3.2.3 Disassembly Instructions!

Prepare the new Front Cover Assy.

Follow the 5.1.2 – 5.1.4 Reassembly Instructions!

Calibration must be implemented after reassembly following below Service Information in CSPN!!

SI:18741-92351Txt pro,CK15 Proximity sensor issue



Replacement

4.7 Co-Branding

Follow the 3.1.1 Disassembly Instructions!
 Prepare the new Co-Branding.
Follow the 5.2.5 Reassembly Instructions!

REMOVAL

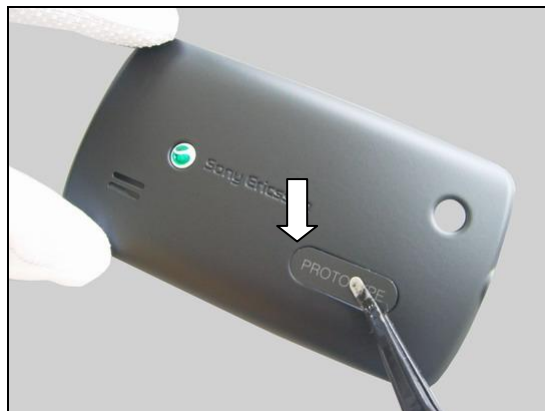
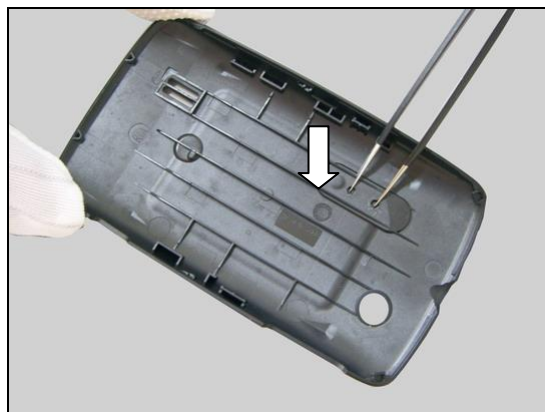
Push from the holes on the back side of the Battery Cover by using tweezers.

Scrap! Cannot be reused!

Peel off the Co-Branding with the Flex Film Assembly Tool.

INSTALLATION

Attach a new Co-Branding in its cavity as shown in picture.



Replacement: Co-Branding

Press to secure the attachment.





Replacement

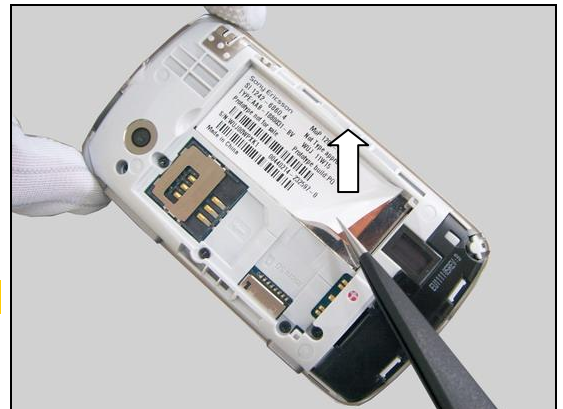
4.8 Core Unit Label

Follow the 3.1.1 – 3.1.2 Disassembly Instructions!
Prepare the new Core Unit Label.
Follow the 5.2.4 – 5.2.5 Reassembly Instructions!

REMOVAL

Read the old Core Unit Label and/or write the information into the 'LabelMake' program before removal.
Remove the Core Unit Label by using the Tweezers.

Be careful not to pull off the copper!

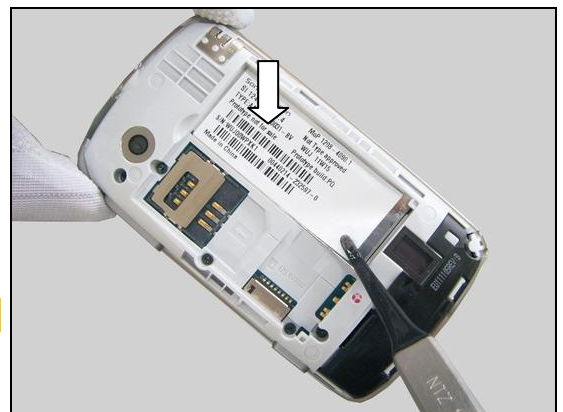


INSTALLATION

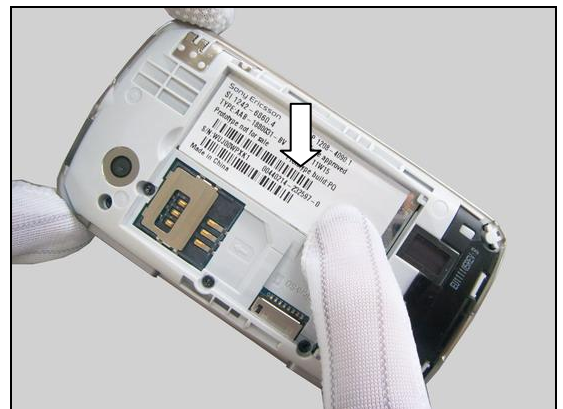
Check that the proper label format is loaded in the Zebra printer and write a new Label by using the 'LabelMake' software.

Attach the new Core Unit Label in place as shown.

One label only is allowed!



Press to secure the attachment.





Replacement:

4.9 Copper Shielding Can

Follow the 3.1.1 – 3.1.2 Disassembly Instructions!
Follow the 4.8 Removal Instructions!
Prepare the new Copper Shielding Can.
Follow the 4.8 Installation Instructions!
Follow the 5.2.4 – 5.2.5 Reassembly Instructions!

REMOVAL

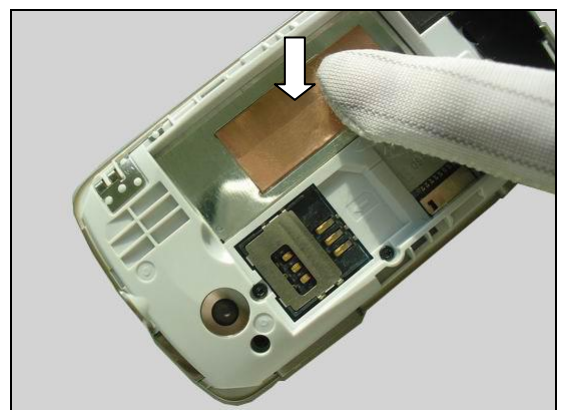
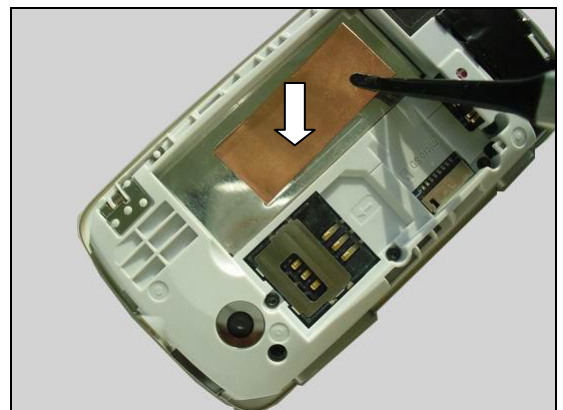
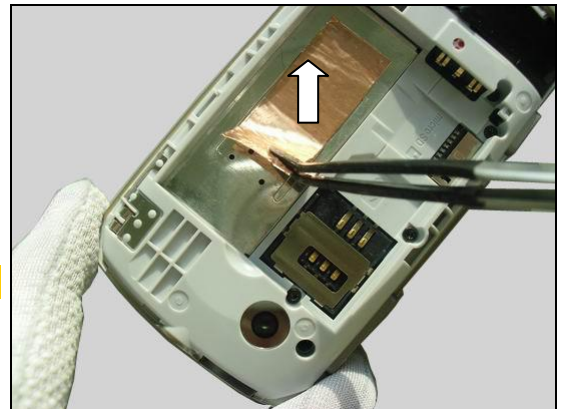
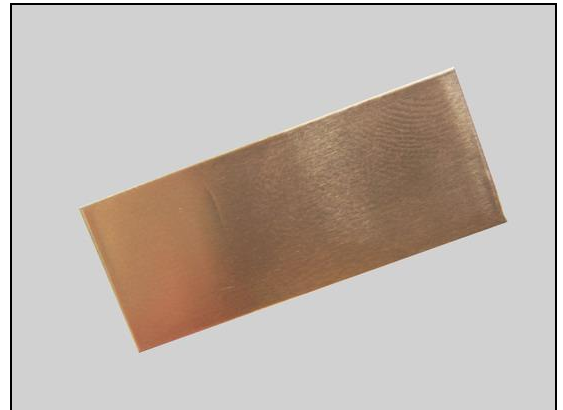
Peel off the Copper Shielding Can from the Main PBA with the Flex Film Assembly Tool.

Scrap! Cannot be reused!

INSTALLATION

Attach the new Copper Shielding Can in place as shown.

Press to make it securely attached.





Replacement:

4.10 Ant Main Flex Module

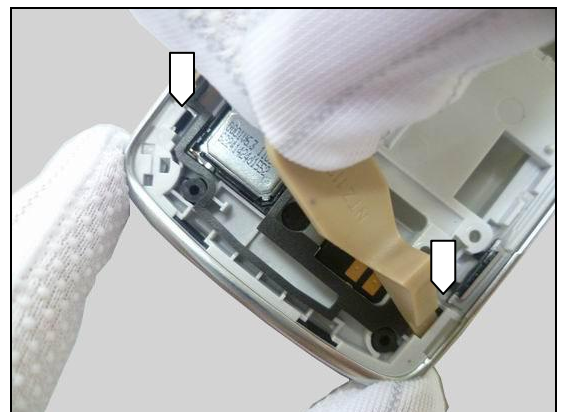
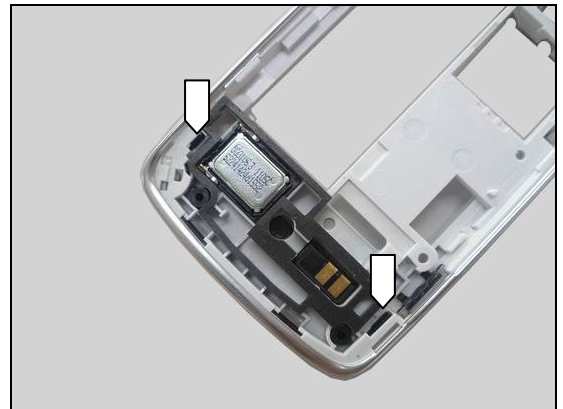
Follow the 3.1.1 – 3.1.4 Disassembly Instructions!
Prepare the new Ant Main Flex Module.
Follow the 5.2.2 – 5.2.5 Reassembly Instructions!

REMOVAL

There are two snap hooks securing the Rear Cover Assy located as shown.

Unsnap the two snap hooks of the Rear Cover Assy by using the Front Opening Tool as shown in picture.

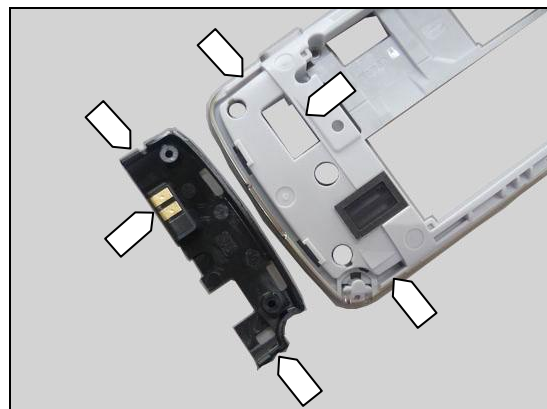
Separate the Ant Main Flex Module from the Rear Cover Assy.



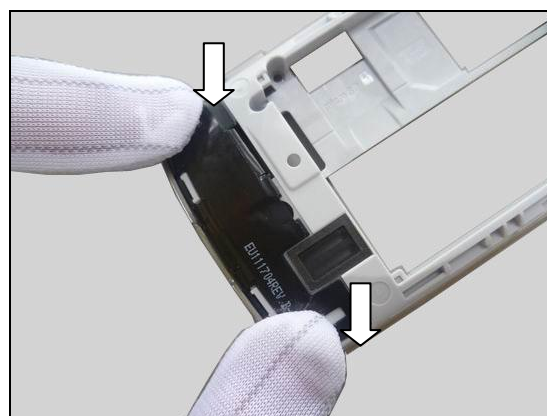
Replacement: Ant Main Flex Module

INSTALLATION

Place the Ant Main Flex Module into its cavity with fingers as shown in picture.



Press on both sides of the Ant Main Flex Module to secure it into the Rear Cover Assy as shown in picture.



Replacement

4.11 Camera Lens

Follow the 3.1.1 – 3.1.4 Disassembly instructions!

Prepare the new Camera Lens

Follow the 5.2.2 – 5.2.5 Reassembly instructions!

REMOVAL

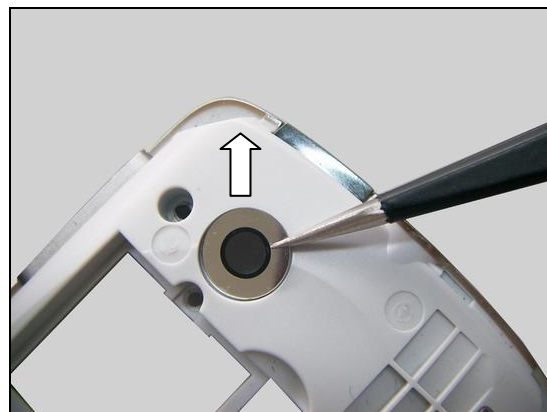
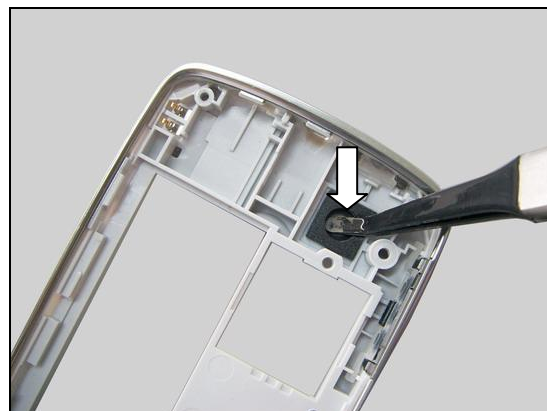
Push the Camera Lens from inside to detach it as shown in picture.

Scrap! Cannot be reused!

Remove the Camera Lens.

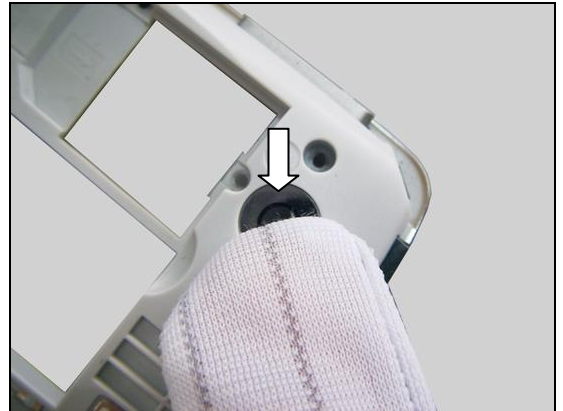
INSTALLATION

Attach a new Camera Lens in its cavity.



Replacement: Camera Lens

Press to secure the attachment.





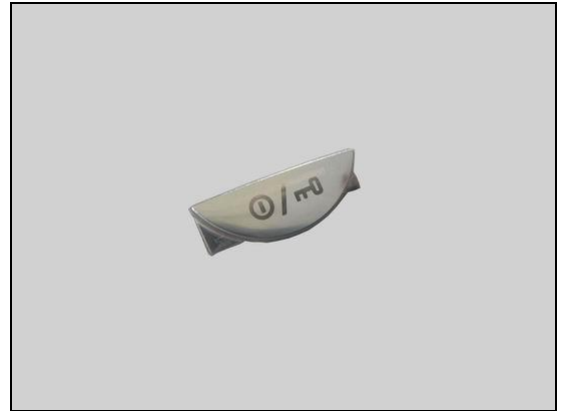
Replacement

4.12 Key Power

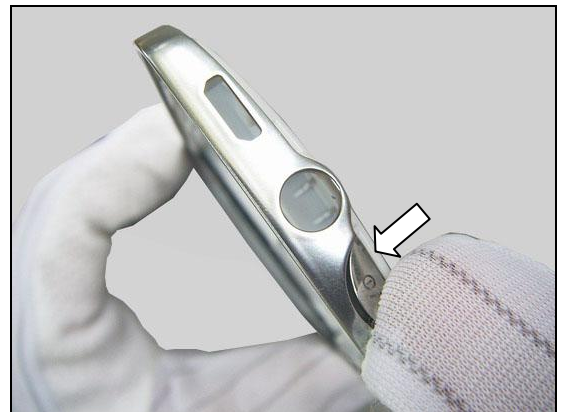
Follow the 3.1.1 – 3.1.4 Disassembly Instructions!
Prepare the new Key Power.
Follow the 5.2.2– 5.2.5 Reassembly Instructions!

REMOVAL

Release the rubber pin of Key Power from its cavity as shown in the picture.



Push the Key Power from outside by using fingers as shown in the picture.



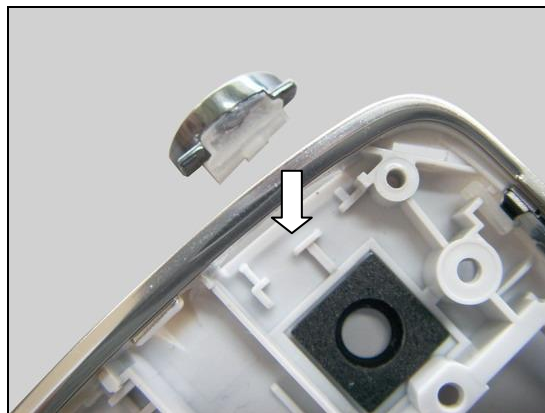
Remove it with the Flex Film Assembly Tool as shown in the picture.



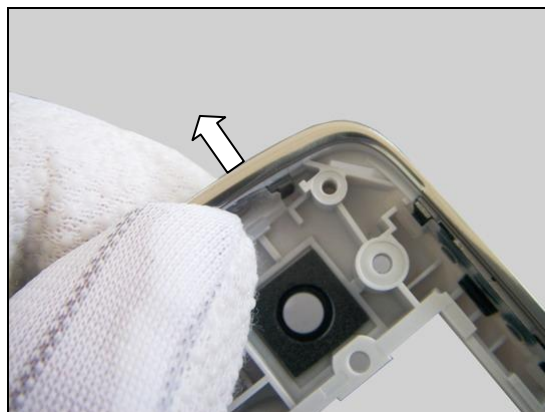
Replacement: Key Power

INSTALLATION

Place the Key Power in its proper position as shown in picture.



Push out the Key Power from inside with fingers to make it into its cavity.



Put the rubber pin properly into its cavity by using the Tweezers as pointers indicated in picture.



Replacement

4.13 Key Volume

Follow the 3.1.1 – 3.1.4 Disassembly Instructions!
 Prepare the new Key Volume.
Follow the 5.2.2– 5.2.5 Reassembly Instructions!

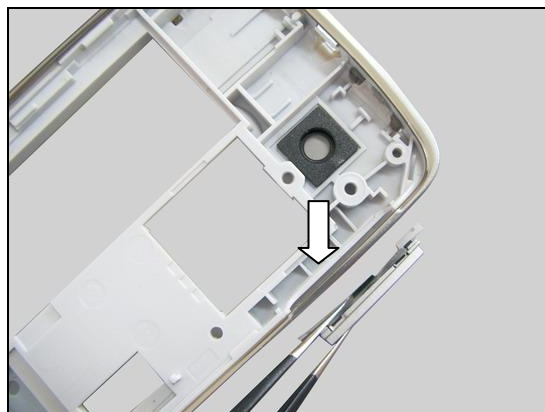
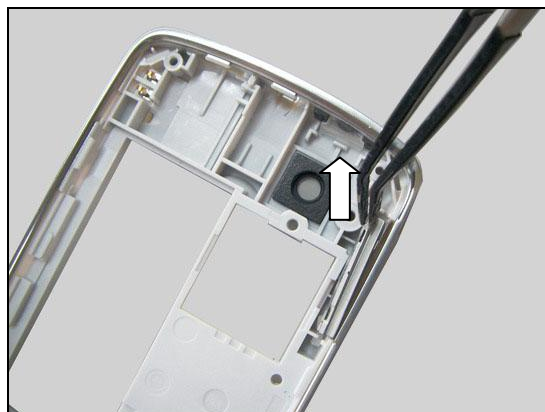
REMOVAL

Release the Key Volume from its cavity as shown in the picture.

Remove it with the Flex Film Assembly Tool.

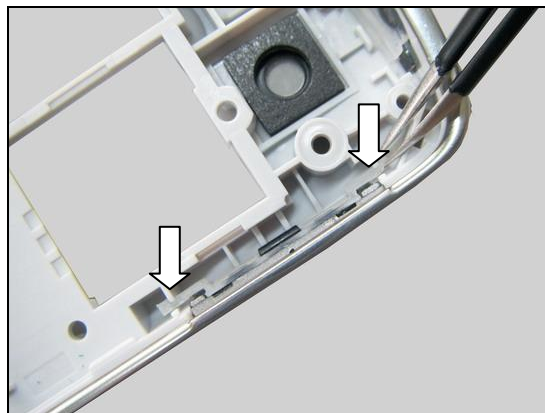
INSTALLATION

Place the Key Volume in its proper position as shown in picture.



Replacement: Key Volume

Put the two rubber pins properly into its cavity by using the Tweezers as pointers indicated in picture.





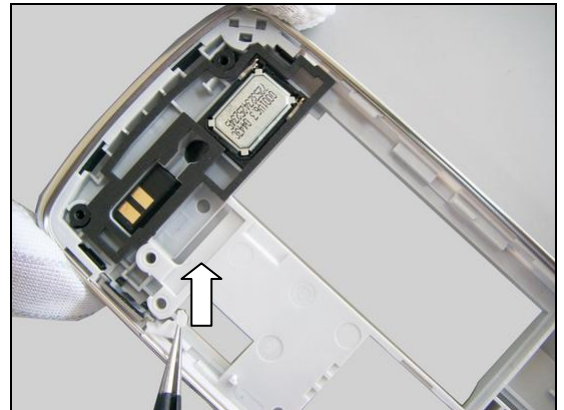
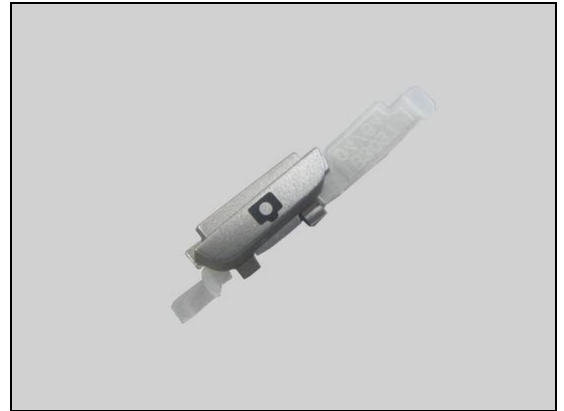
Replacement

4.14 Key Camera

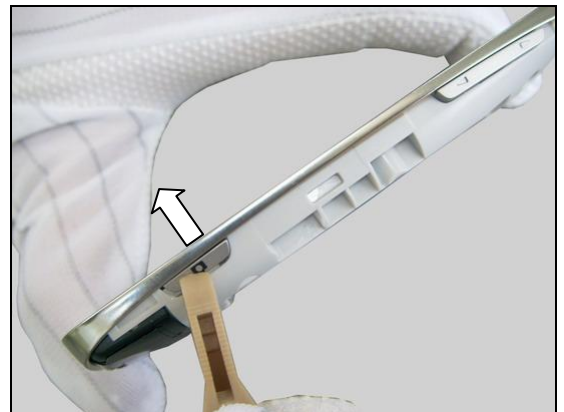
Follow the 3.1.1 – 3.1.4 Disassembly Instructions!
Prepare the new Key Camera.
Follow the 5.2.2– 5.2.5 Reassembly Instructions!

REMOVAL

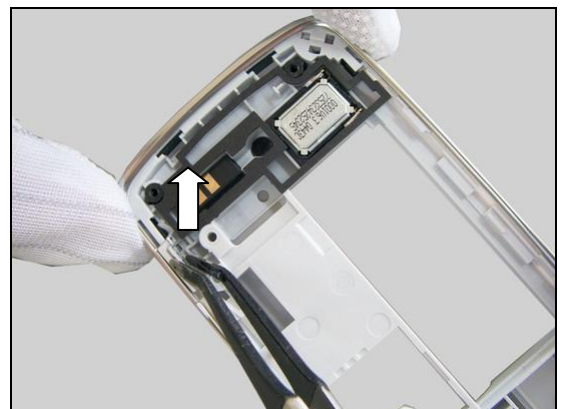
Release the two rubber pins of Key Camera from its cavity as shown in the picture.



Push the Key Camera from outside by using Front Opening Tool as shown in the picture.



Remove it with the Flex Film Assembly Tool as shown in the picture.

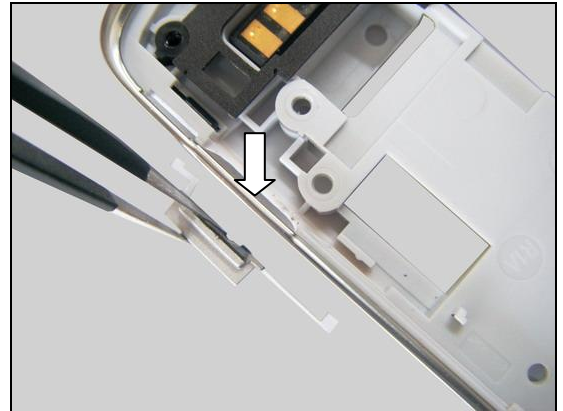




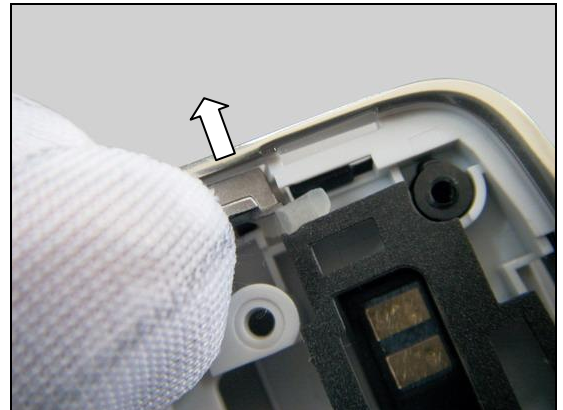
Replacement: Key Camera

INSTALLATION

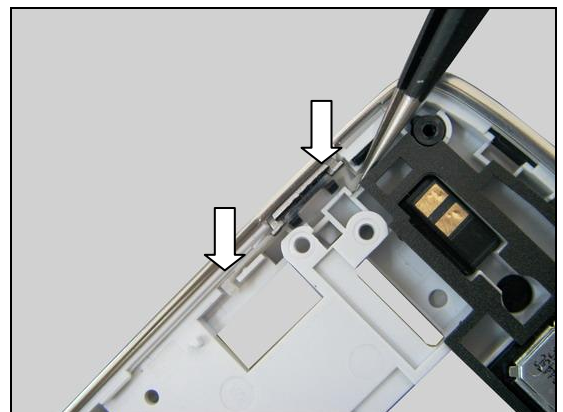
Place the Key Camera in its proper position as shown in picture.



Push out the Key Camera from inside with fingers to make it into its cavity.



Put the two rubber pins properly into its cavity by using the Tweezers as pointers indicated in picture.





Replacement

4.15 Loudspeaker

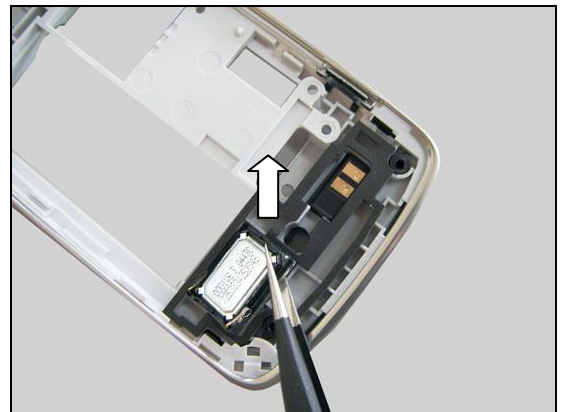
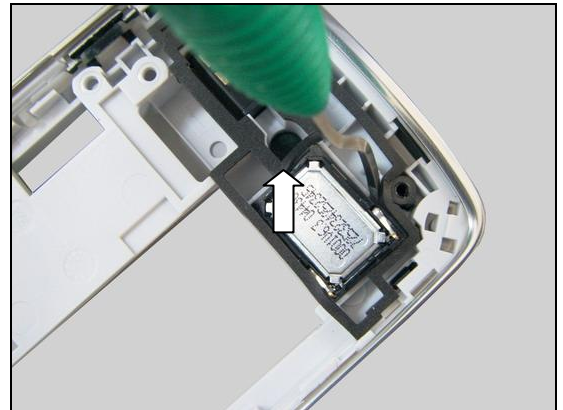
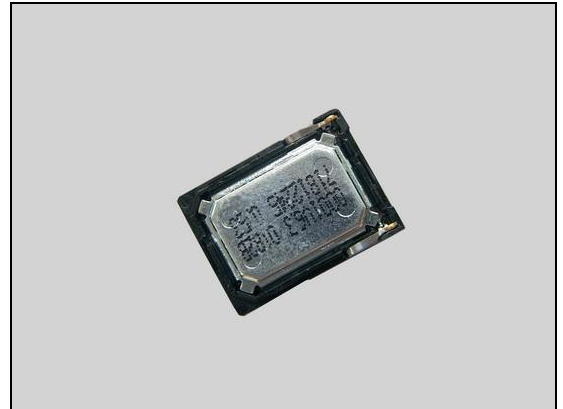
Follow the 3.1.1 – 3.1.4 Disassembly Instructions!
Prepare the new Loudspeaker.
Follow the 5.2.2– 5.2.5 Reassembly Instructions!

REMOVAL

Insert Dentist hook at this corner and detach the Loud speaker from its cavity.

Remove it by using the Tweezers.

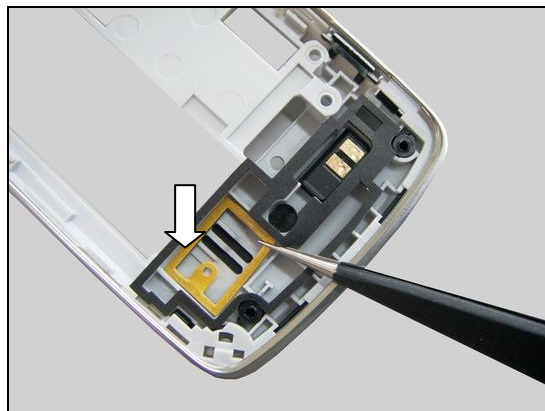
Clean the residues of the old Speaker Sponge before installation!



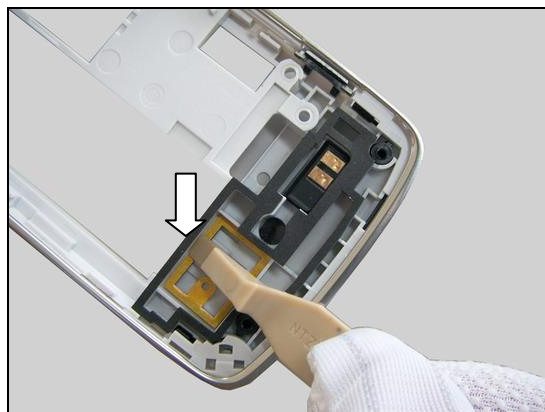
Replacement: Loudspeaker

INSTALLATION

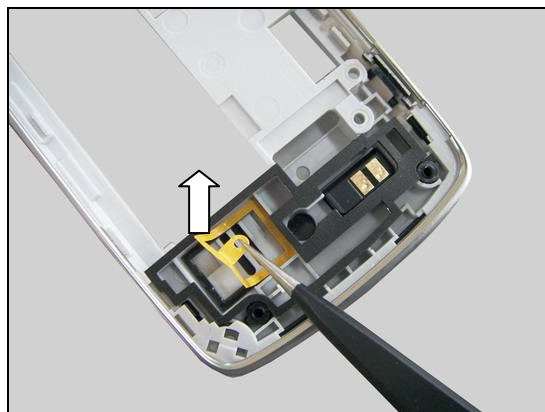
Attach a new Sponge Speaker Inner in its cavity.



Press to make it securely attached by using Front Opening Tool.

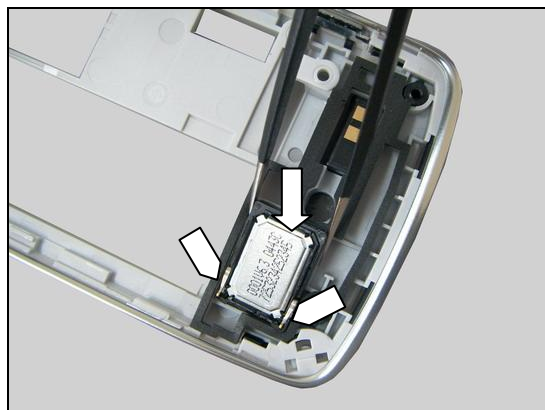


Peel off the protection paper.



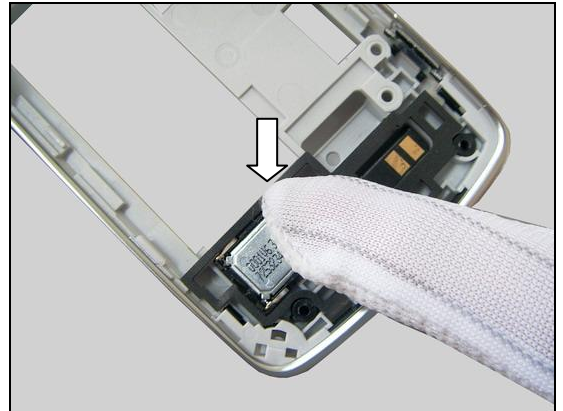
Place the Loudspeaker into its cavity in the right direction.

The Loudspeaker contact spring pins must be placed on the left side as pointers indicated in picture!



Replacement: Loudspeaker

Press to make it securely attached.



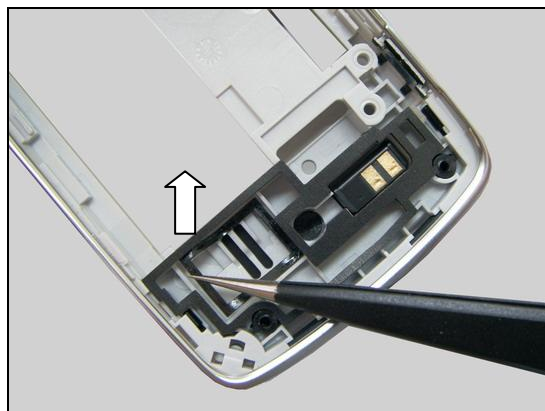
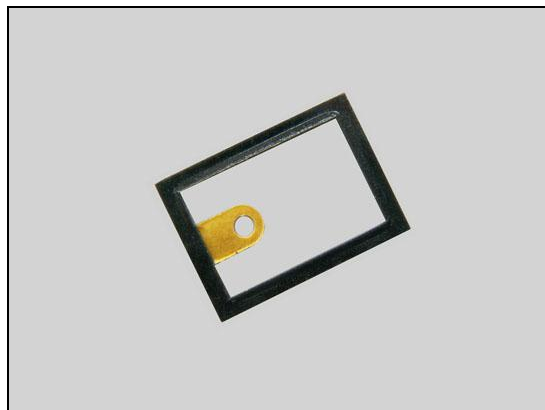
Replacement

4.16 Sponge Speaker Inner

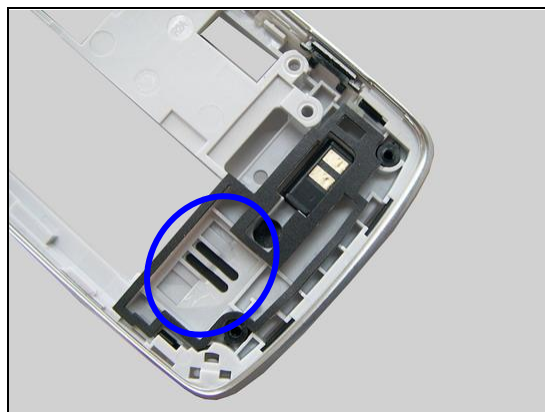
Follow the 3.1.1 – 3.1.4 Disassembly Instructions!
Follow the 4.15 Removal Instructions!
 Prepare the new Sponge Speaker Inner.
Follow the 4.15 Installation Instructions!
 Follow the 5.2.2– 5.2.5 Reassembly Instructions!

REMOVAL

Peel off it by using the Tweezers.



Check and clean the residues adhesive.



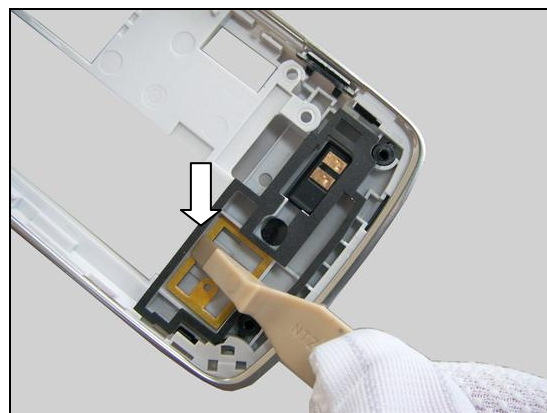
INSTALLATION

Attach a new Sponge Speaker Inner in its cavity.

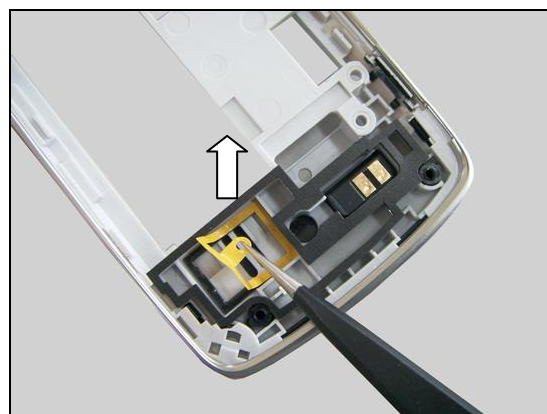


Replacement: Sponge Speaker Inner

Press to make it securely attached by using Front Opening Tool.



Peel off the protection paper.



Replacement

4.17 Liquid Intrusion Indicator

There are two Liquid Intrusion Indicators on the phone.

INSPECTION

Follow the 3.1.1 – 3.1.2 Disassembly Instructions!

To check whether the Liquid Intrusion Indicator (1) has been activated (reddish color).

If activated:

Follow the 3.1.3 – 3.1.5 Disassembly instructions!

Carry out the replacement as described below.

Follow the 5.2.1– 5.2.5 Reassembly instructions!

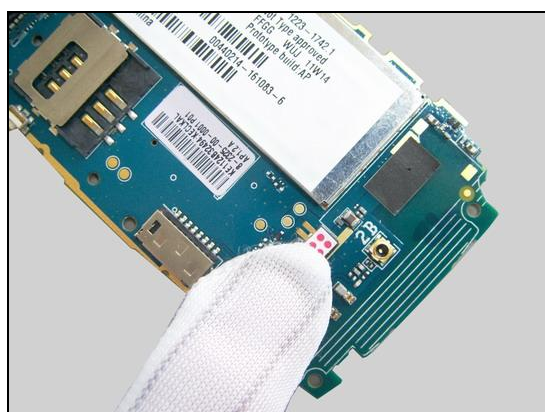
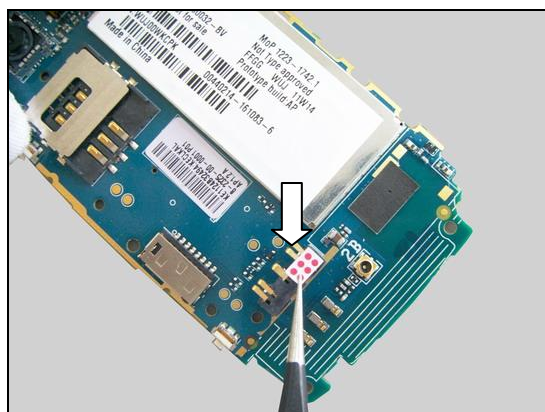
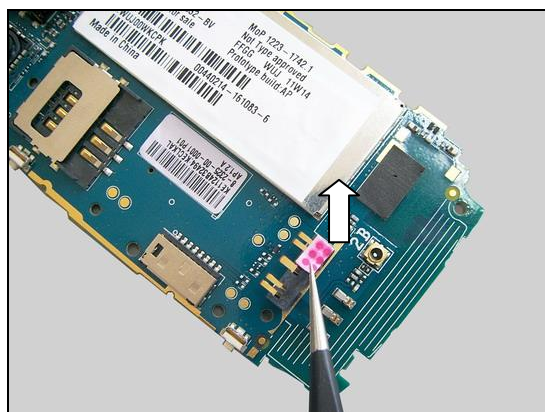
REMOVAL

Detach the activated Liquid Intrusion Indicator off the Battery Connector by using the Tweezers.

INSTALLATION

Attach a new Liquid Intrusion Indicator in alignment with the edges of the Battery Connector by using the Tweezers as shown in picture.

Press to secure the attachment with fingers.





Replacement: Liquid Intrusion Indicator

INSPECTION

Follow the 3.2.1 – 3.2.3 Disassembly Instructions!

To check whether the Liquid Intrusion Indicator (2) has been activated (reddish color).

If activated:

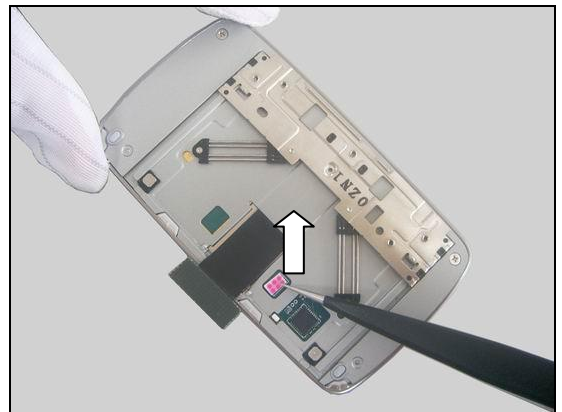
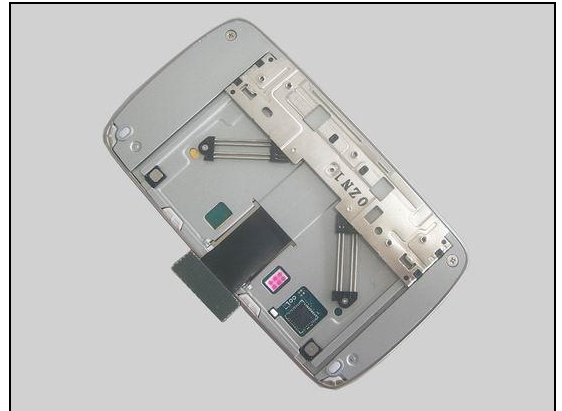
Follow the 3.2.3 – 3.2.4 Disassembly instructions!

Carry out the replacement as described below.

Follow the 5.1.1 – 5.1.4 Reassembly instructions!

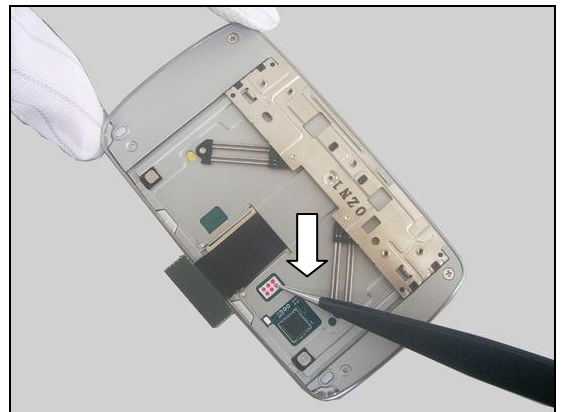
REMOVAL

Detach the activated Liquid Intrusion Indicator off Sub Board Assy by using the Tweezers.

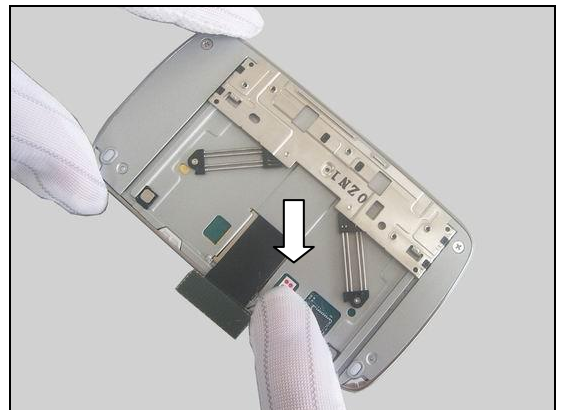


INSTALLATION

Attach a new Liquid Intrusion Indicator in alignment with the guiding frame by using the Tweezers as shown in picture.



Press to secure the attachment with fingers.





Replacement

4.18 Sponge Speaker

Follow the 3.1.1 – 3.1.4 Disassembly Instructions!
Prepare the new Sponge Speaker.
Follow the 5.2.2– 5.2.5 Reassembly Instructions!

REMOVAL

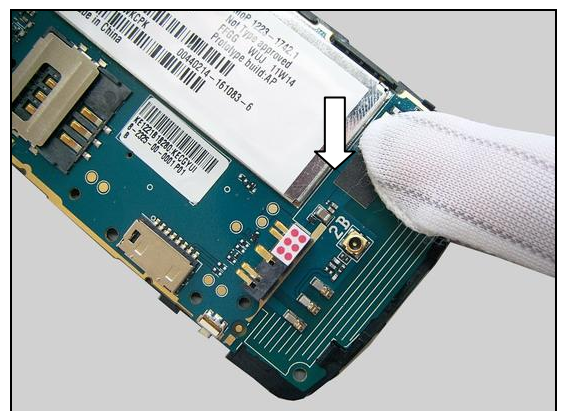
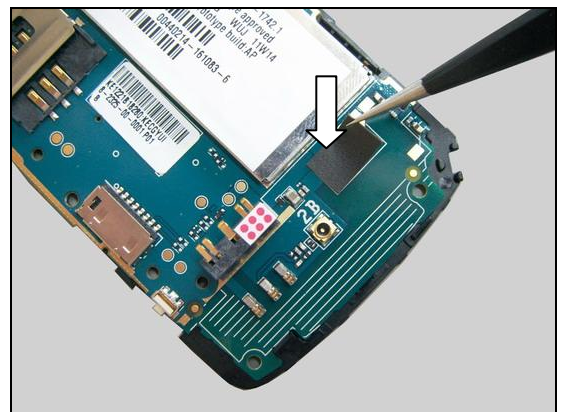
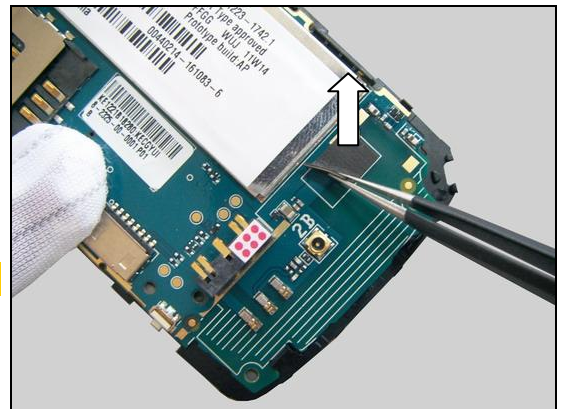
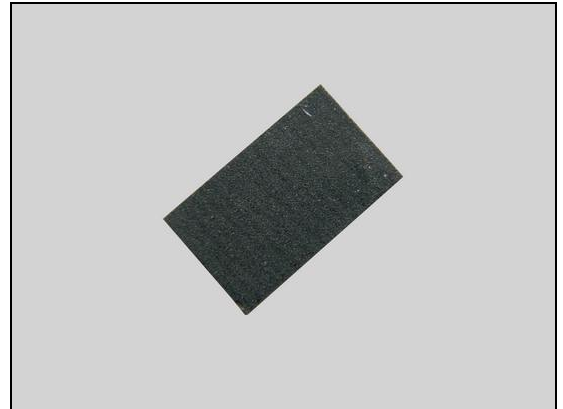
Peel off the Sponge Speaker from the Main PBA with the Tweezers.

Scrap! Cannot be reused!

INSTALLATION

Attach a new Sponge Speaker into the printed rectangle area on the Main PBA by using the Tweezers as shown in picture.

Press to make it securely attached.





Replacement

4.19 Camera 3 Mpixel

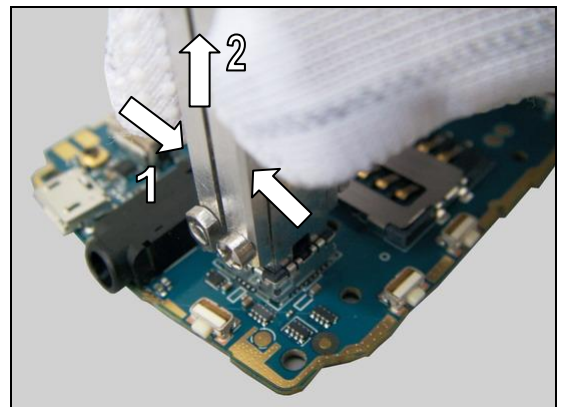
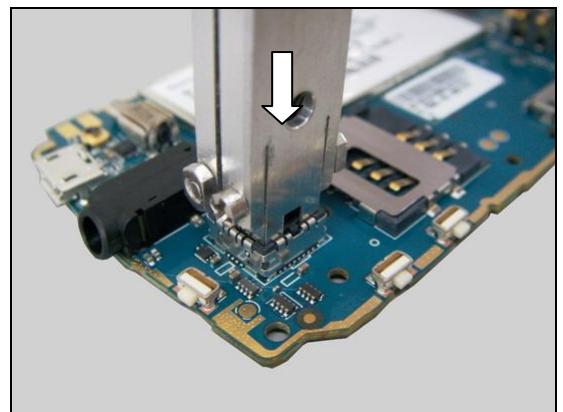
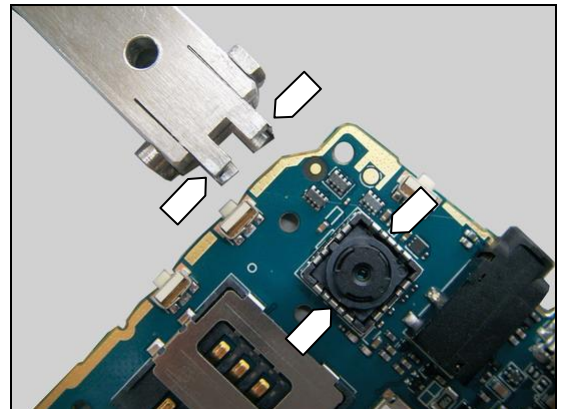
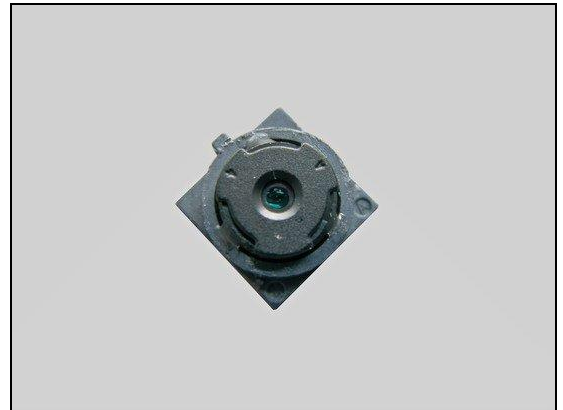
Follow the 3.1.1 – 3.1.5 Disassembly Instructions!
Prepare the new Sponge Speaker.
Follow the 5.2.1– 5.2.5 Reassembly Instructions!

REMOVAL

Align the orientation of the blades on the Camera Removal Tool in relation to the position of the camera socket!

Insert the Camera Removal Tool into the camera socket as shown in picture.

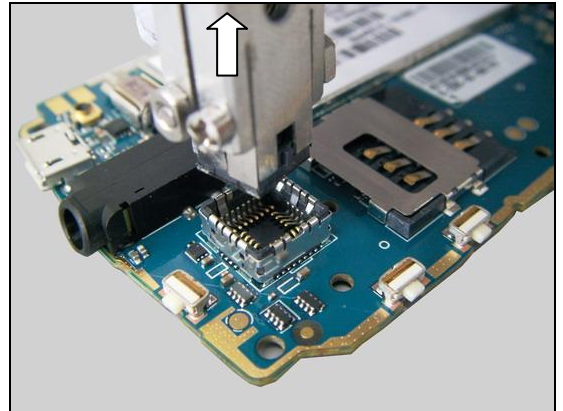
Grip (1) the Camera Removal Tool and lift (2) straight up to remove the Camera from its socket.





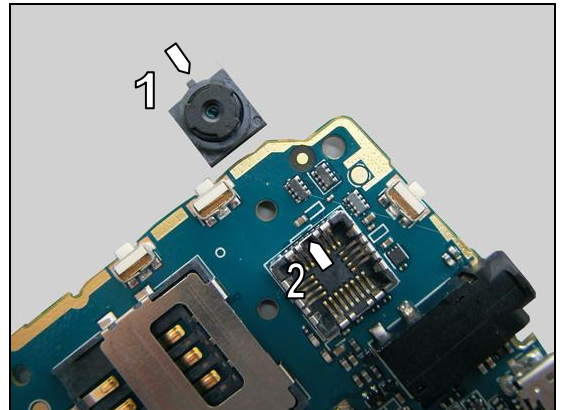
Replacement: Camera 3 Mpixel

Remove the Camera.

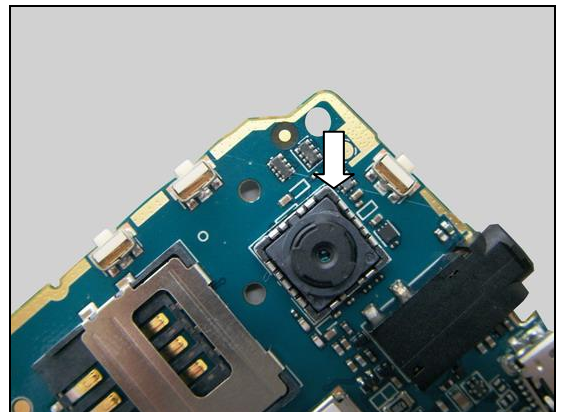


INSTALLATION

Make sure the orientation of the Camera and its socket: camera pin (1) into socket slot (2) when installing the Camera.

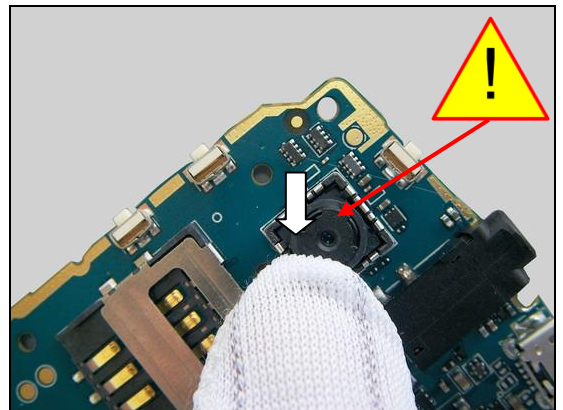


Place the Camera into the socket.



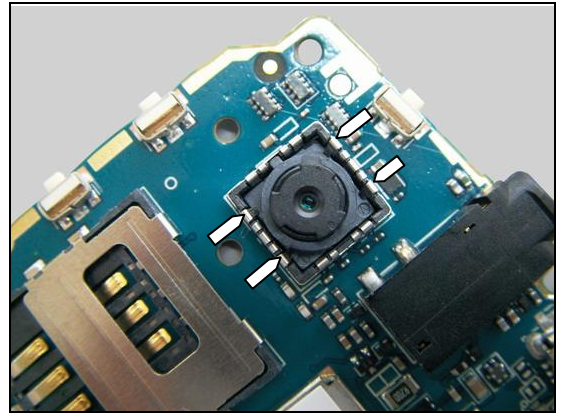
Press to secure the Camera to the bottom of the socket.

Do not touch the lens!



Replacement: Camera 3 Mpixel

Make sure the four spring pins are above the camera as pointers indicated in picture!





Replacement

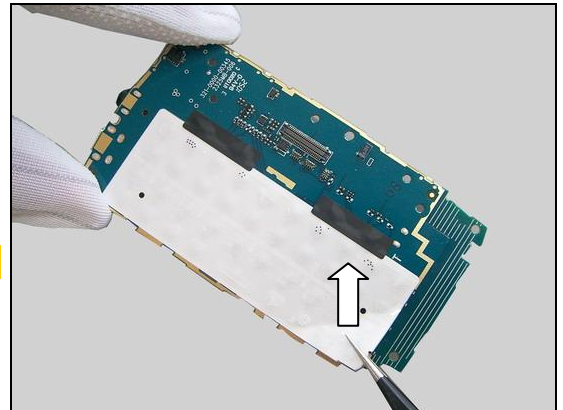
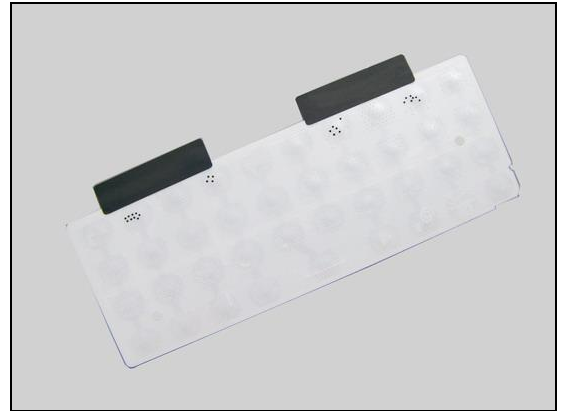
4.20 Metal Dome keypad

Follow the 3.1.1 – 3.1.5 Disassembly Instructions!
Prepare the new Metal Dome keypad.
Follow the 5.2.1– 5.2.5 Reassembly Instructions!

REMOVAL

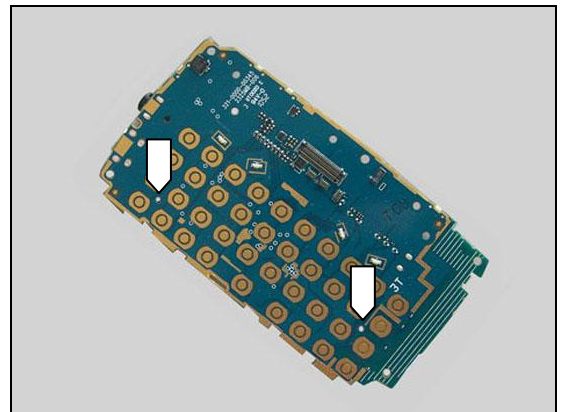
Remove the Metal Dome keypad from the Main PBA.

Scrap! Cannot be reused!

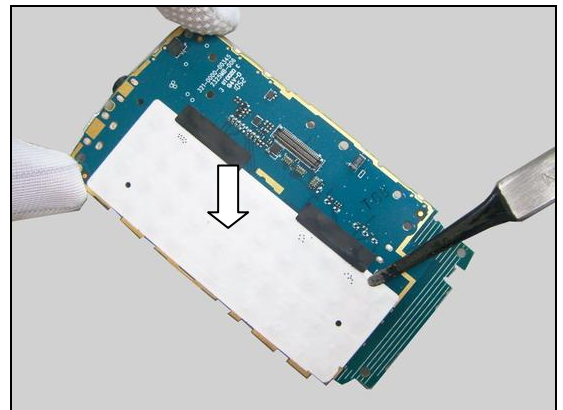


INSTALLATION

There are two guiding holes on the Main PBA for alignment.

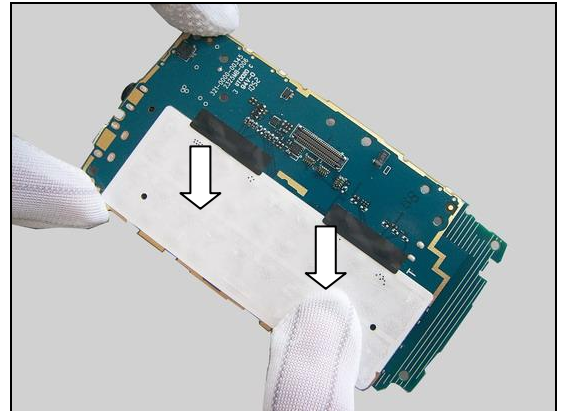


Attach a new Metal Dome keypad in alignment with guiding holes as pointers indicated in picture.



Replacement: Metal Dome keypad

Press to make it securely attached.





Replacement

4.21 Ear Speaker

Follow the 3.2.1 – 3.2.4 Disassembly Instructions!
Prepare the new Ear Speaker
Follow the 5.1.1 – 5.1.4 Reassembly Instructions!

REMOVAL

Insert Dentist hook underneath the Ear Speaker and loosen it.

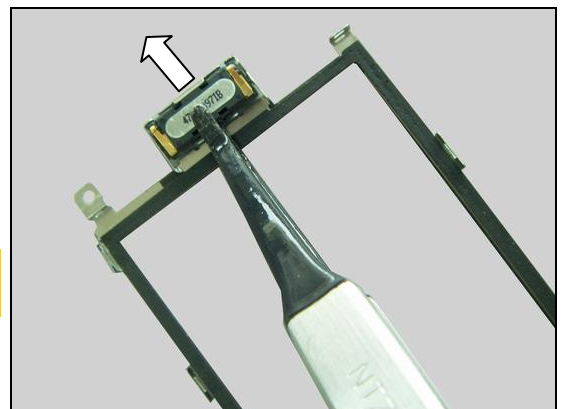
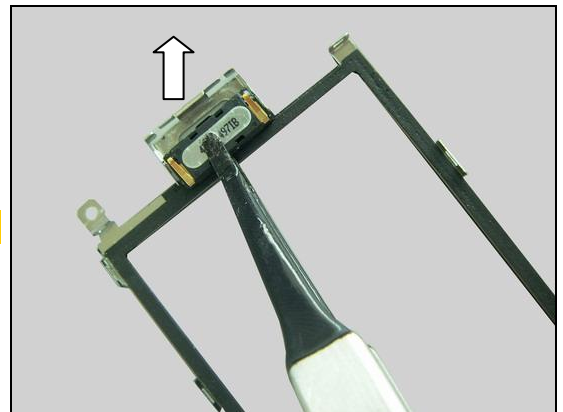
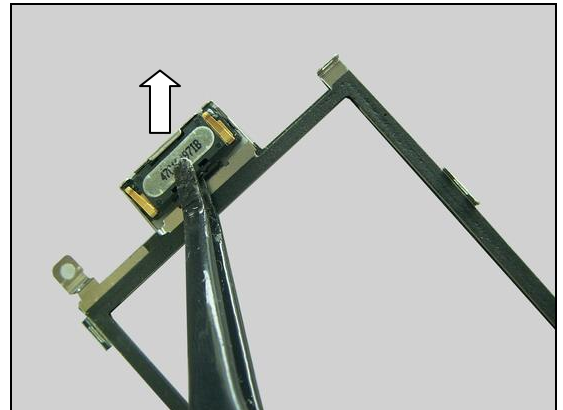
Remove the Ear Speaker.

Scrap the display shielding if the adhesive is dry!

INSTALLATION

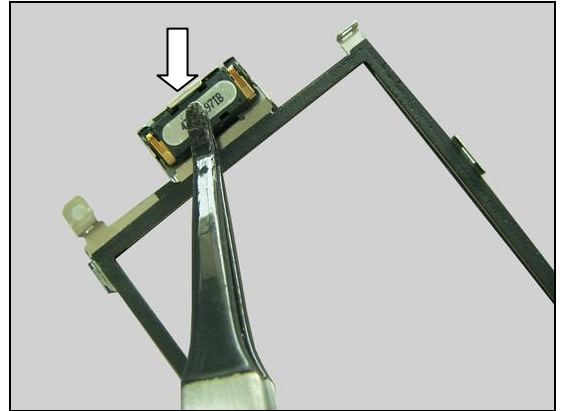
Place the Ear Speaker in the right direction as shown in picture.

Ear Speaker contact spring pins are towards the top side of the phone as shown in picture.



Replacement: Ear Speaker

Press to make it securely attached.





Replacement

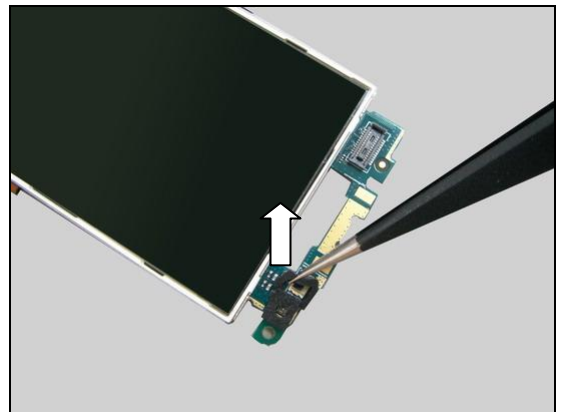
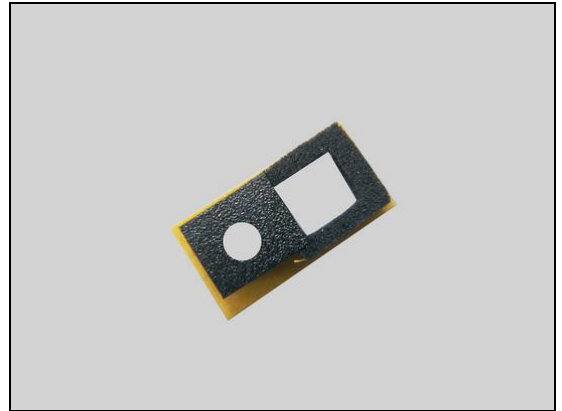
4.22 Sponge Proximity Sensor

Follow the 3.2.1 – 3.2.4 Disassembly Instructions!
Prepare the new Sponge Proximity Sensor
Follow the 5.1.1 – 5.1.4 Reassembly Instructions!

REMOVAL

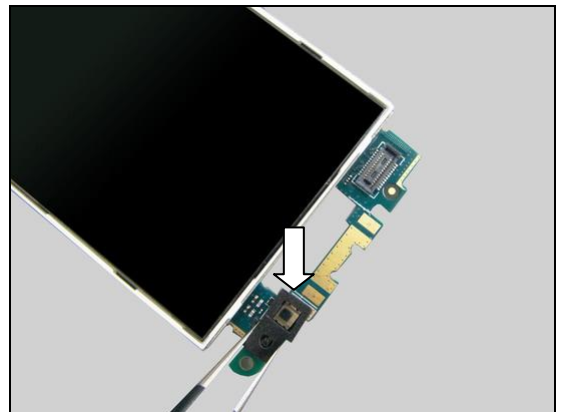
Peel off the Sponge Proximity Sensor from the Upper Board Assy by using the Tweezers.

Scrap! Cannot be reused!

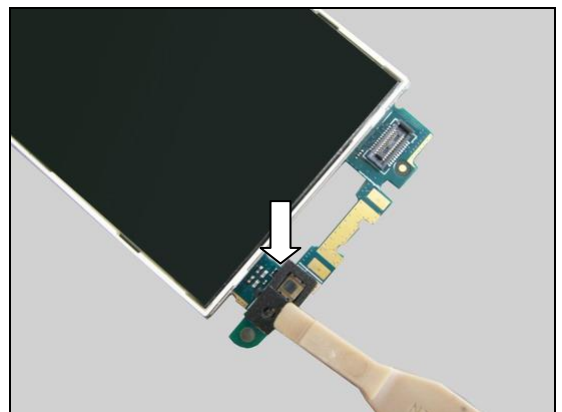


INSTALLATION

Attach the Sponge Proximity Sensor in alignment with the guiding lines on Upper Board Assy as shown in picture.



Press to secure the attachment with the Front Opening Tool.





Replacement

4.23 Hinge module

Follow the 3.2.1 – 3.2.4 Disassembly Instructions!
Prepare the new Hinge module.
Follow the 5.1.1 – 5.1.4 Reassembly Instructions!

REMOVAL

There are four hooks securing on the Hinge module.

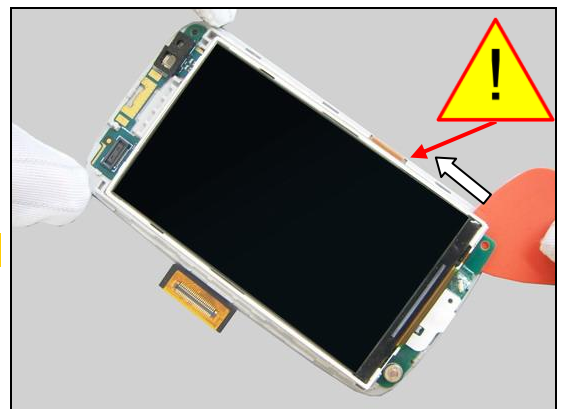
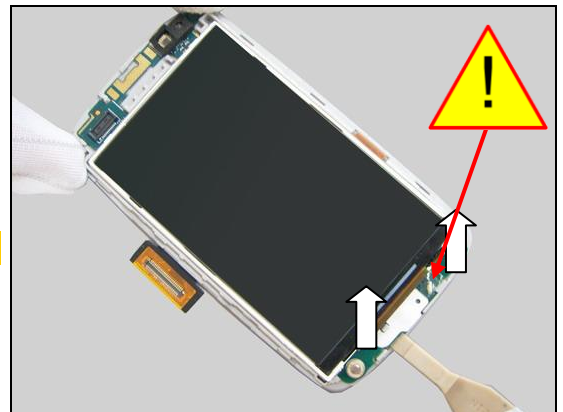
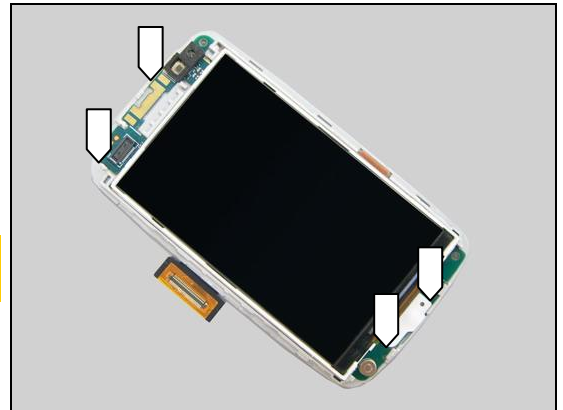
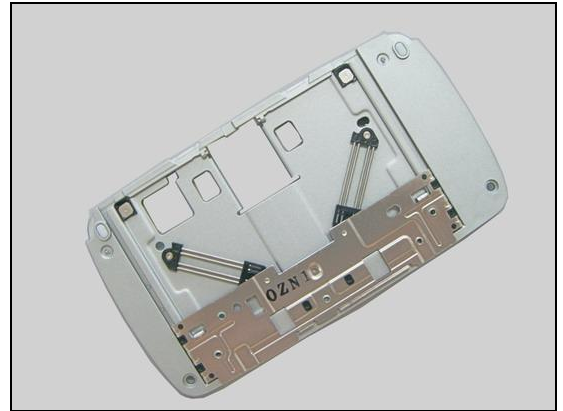
Be careful the two pieces of Conductive Tape between Hinge Module and Sub Board.

Unsnap the two bottom hooks by using the Front Opening Tool as show in picture.

Be careful not to damage the LED!

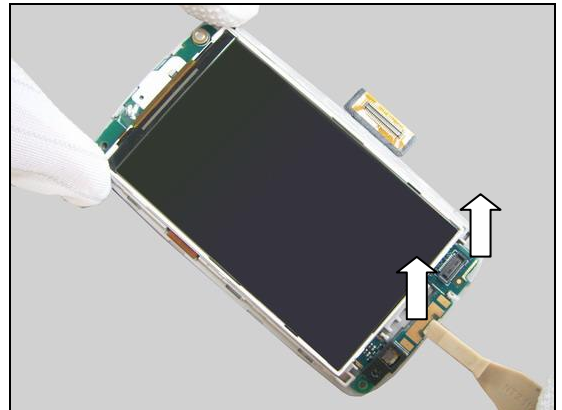
Insert the Guitar Pick and slide it along the right side to release the Conductive Tape as shown in the picture.

Be careful not to damage the FPC of the display!



Replacement: Hinge module

Unsnap the top hooks by using the Front Opening Tool.

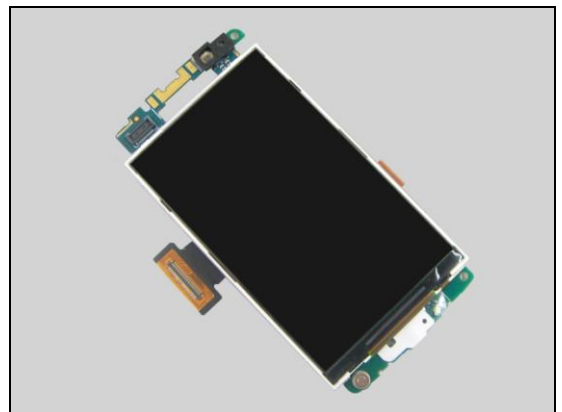


Lift up the Upper Board, Rotate the Upper Board and separate them as shown in picture.

Be careful not to damage the Hinge FPC Assembly!



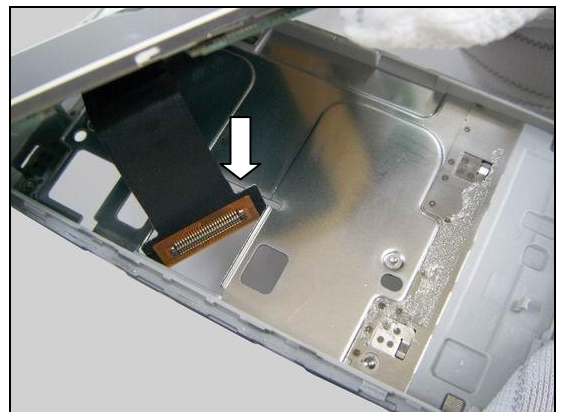
Scraped the Sub board Assy if out of shape or damaged.



INSTALLATION

Carefully thread the Hinge FPC Assembly into the Hinge module as shown in the picture.

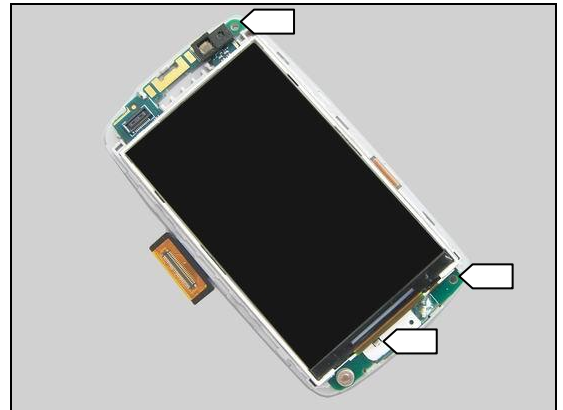
Be careful not to damage the Hinge FPC Assembly!



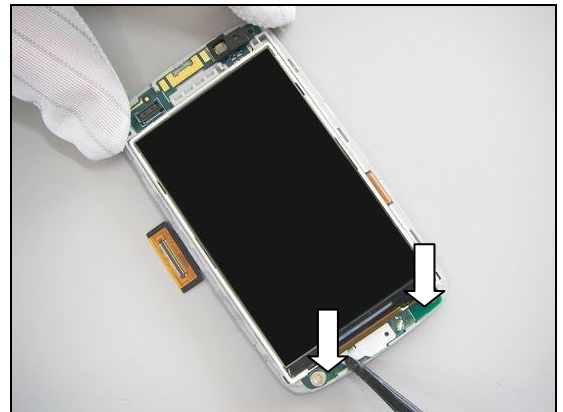


Replacement: Hinge module

Place the Upper Board into the Hinge module. Align the Upper Board with the Hinge module by using the guiding pillar on the Hinge module and the two screw holes as pointers indicated in picture.



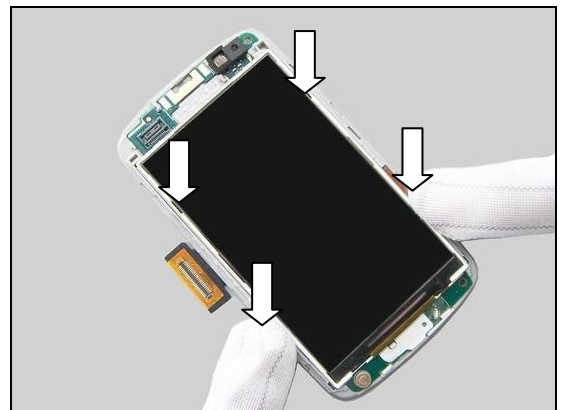
Press with the Flex Film Assembly Tool to snap the hooks at the bottom as shown in picture.



Press with the Flex Film Assembly Tool to snap the hooks at the top as shown in picture.



Press on the plastic edge of the Main Display to make the Upper Board securely attached on Hinge module.



Replacement

4.24 Conductive Gasket

Follow the 3.2.1 – 3.2.4 Disassembly Instructions!

Follow the 4.23 Removal Instructions!

Prepare the new Conductive Gasket.

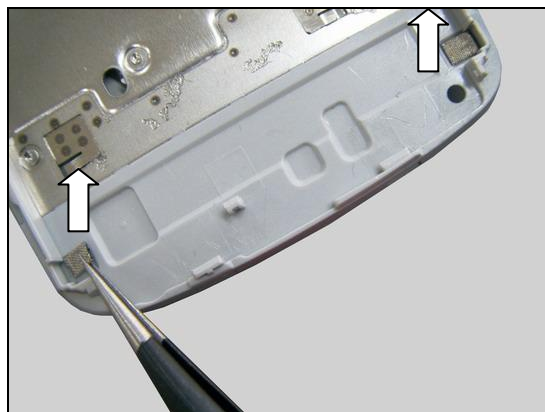
Follow the 4.23 Installation Instructions!

Follow the 5.1.1 – 5.1.4 Reassembly Instructions!

REMOVAL

Peel off the two Conductive Gaskets from the Hinge Module by using the Tweezers.

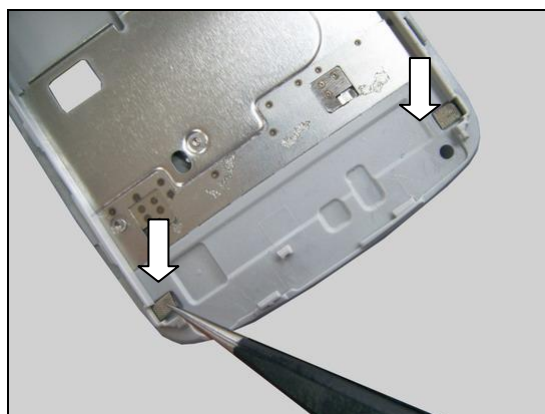
Scrap! Cannot be reused!



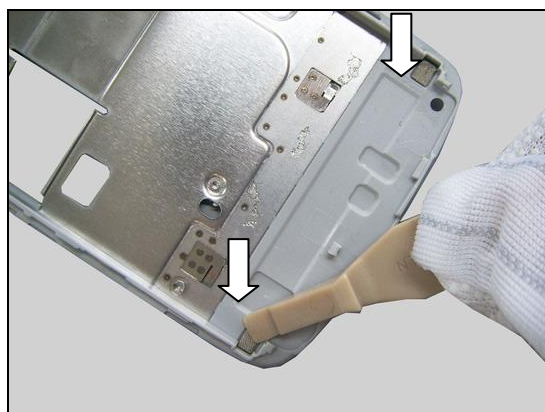
INSTALLATION

Attach a new Conductive Sponge in its cavity as shown in picture.

Do the same with the other one!



Press to make them securely attached.





Replacement

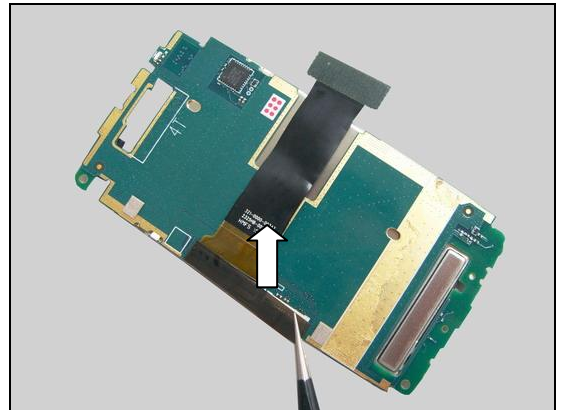
4.25 Mylar Hinge FPC

Follow the 3.2.1 – 3.2.4 Disassembly Instructions!
Follow the 4.23 Removal Instructions!
Prepare the new Mylar Hinge FPC.
Follow the 4.23 Installation Instructions!
Follow the 5.1.1 – 5.1.4 Reassembly Instructions!

REMOVAL

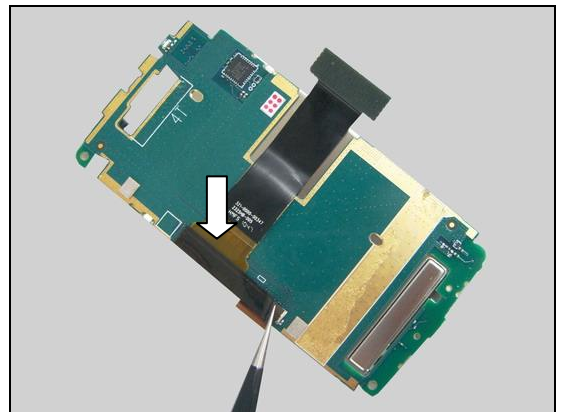
Peel off the Mylar Hinge FPC by using the Tweezers.

Scrap! Cannot be reused!

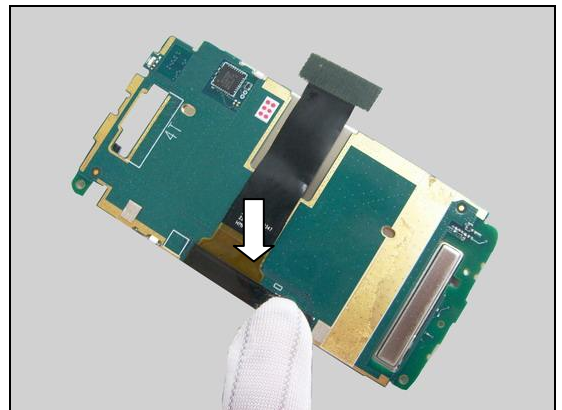


INSTALLATION

Attach the Mylar Hinge FPC in its proper position as shown in picture.



Press to make it securely attached.





Replacement:

4.26 Hinge FPC Assembly

Follow the 3.2.1 – 3.2.4 Disassembly Instructions!
Follow the 4.23&4.25 Removal Instructions!
Prepare the new Hinge FPC Assembly.
Follow the 4.25&4.23 Installation Instructions!
Follow the 5.1.1 – 5.1.4 Reassembly Instructions!

REMOVAL

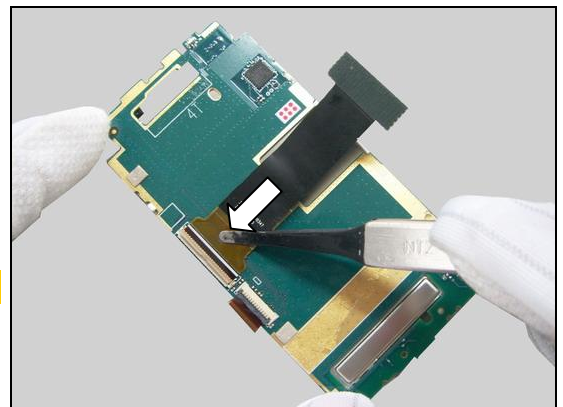
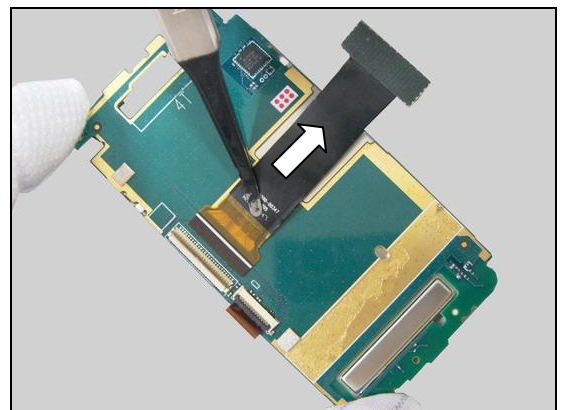
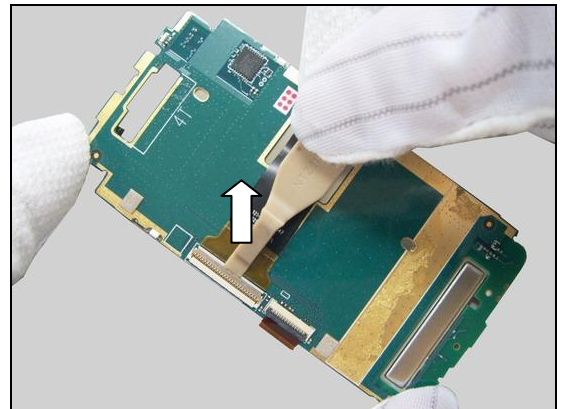
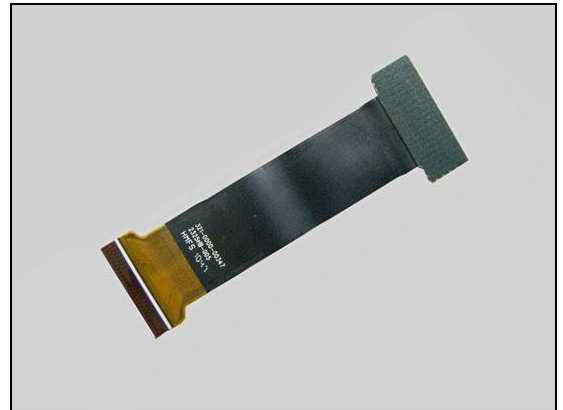
Unlock the Hinge FPC Assembly Connector by using the Front Opening Tool.

Remove the Hinge FPC Assembly.

INSTALLATION

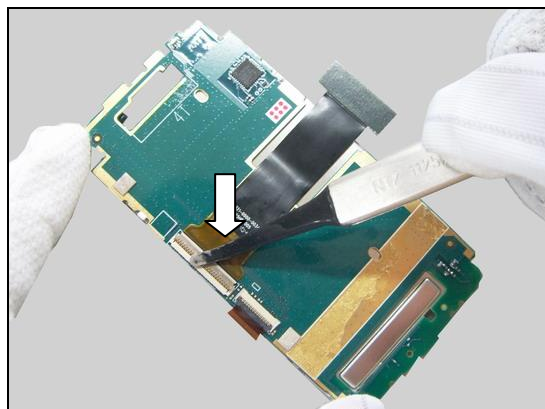
Insert the Hinge FPC Assembly to the connector by using the Flex Film Assembly Tool as shown in picture.

Pay attention to the direction of Hinge FPC Assembly.



Replacement: Hinge FPC Assembly

Lock the connector by using the Flex Film Assembly Tool.





Replacement

4.27 Conductive Tape 10*18mm

Follow the 3.2.1 – 3.2.4 Disassembly Instructions!
Follow the 4.23, 4.25, 4.26 Removal Instructions!
Prepare the new Conductive Tape 10*18mm.
Follow the 4.26, 4.25, 4.23 Installation Instructions!
Follow the 5.1.1 – 5.1.4 Reassembly Instructions!

REMOVAL

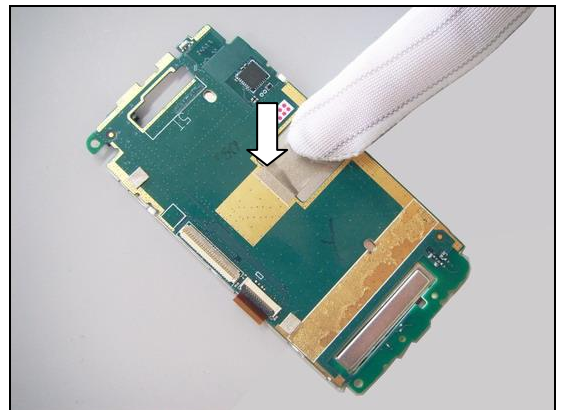
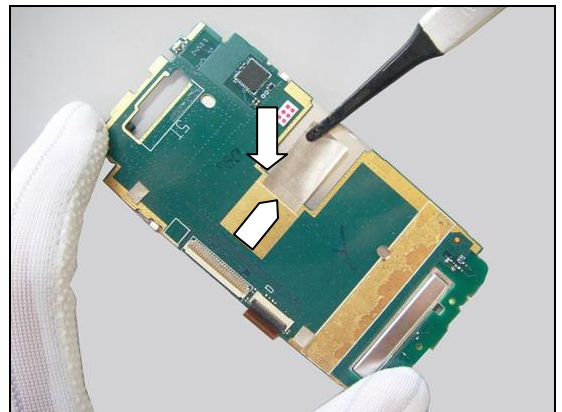
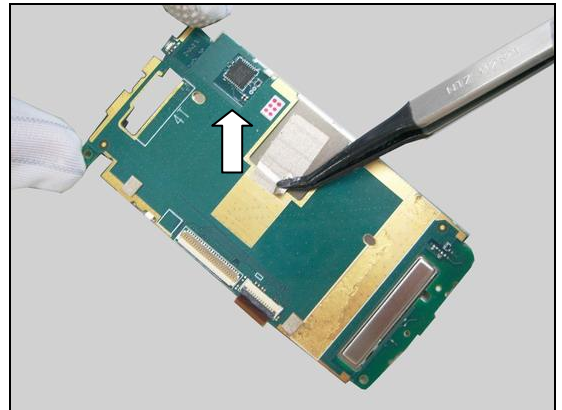
Peel off the Conductive Tape 10*18mm by using the Tweezers.

Scrap! Cannot be reused!

INSTALLATION

Attach a new Conductive Tape 10*18mm in alignment with the guiding line as pointers indicated in pictures.

Press to make it securely attached.



Replacement:

4.28 Display 3.0 inch TFT

Follow the 3.2.1 – 3.2.4 Disassembly Instructions!
Follow the 4.23&4.25, 4.26, 4.27 Removal Instructions!
 Prepare the new Display 3.0 inch TFT.
Follow the 4.27&4.26, 4.25, 4.23 Installation Instructions!
Follow the 5.1.1 – 5.1.4 Reassembly Instructions!

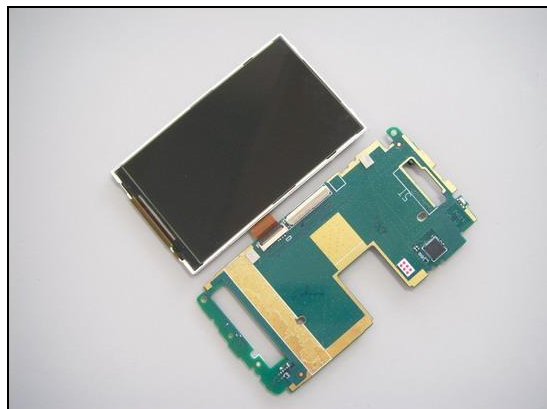
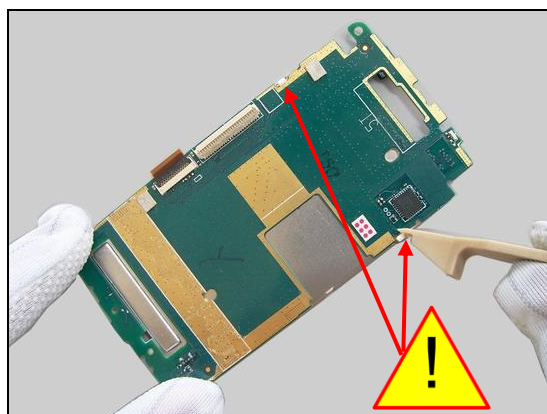
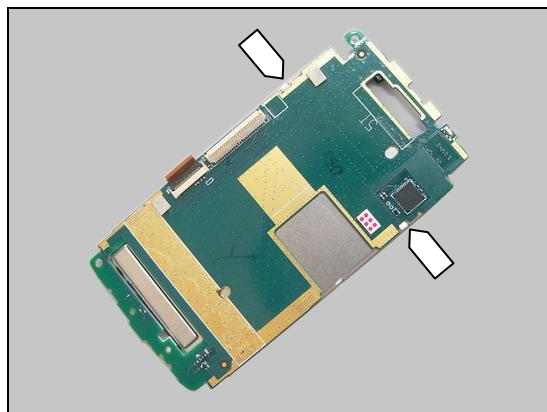
REMOVAL

There are two hooks securing Sub Board Assy.

Unsnap the hooks by using the Front Opening Tool.

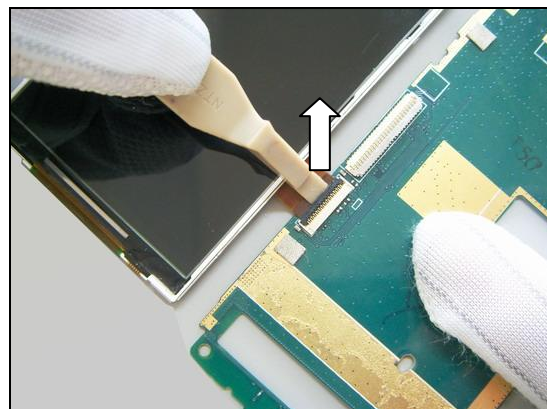
Be careful not to damage the hooks!

Carefully turn the Display over and place it next to the Sub Board Assy as shown in the picture.

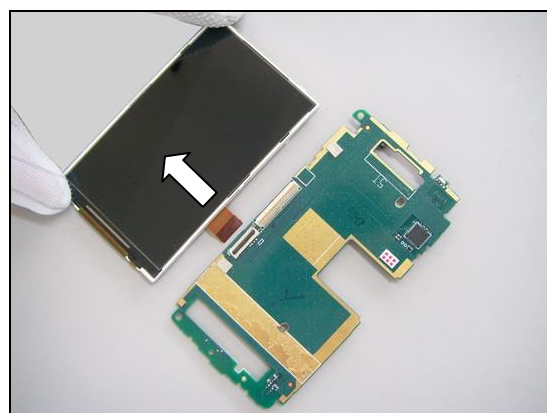


Replacement: Display 3.0 inch TFT

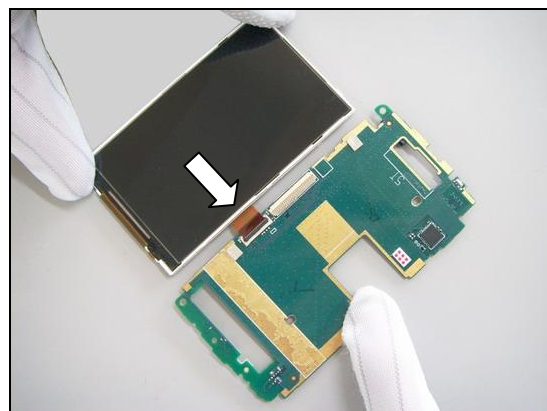
Unlock the connector by using the Front Opening Tool.



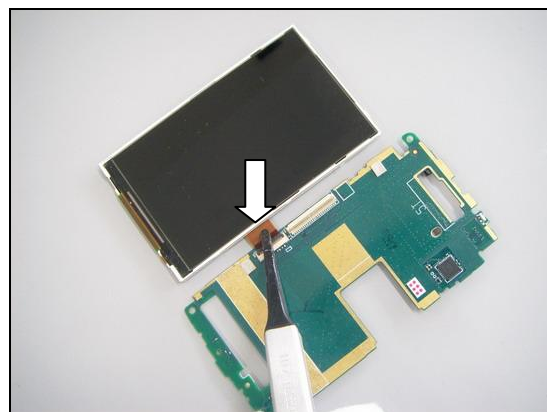
Remove the Display in the direction of the arrow.

**INSTALLATION**

Hold the Main Display and insert the FPC into the connector.



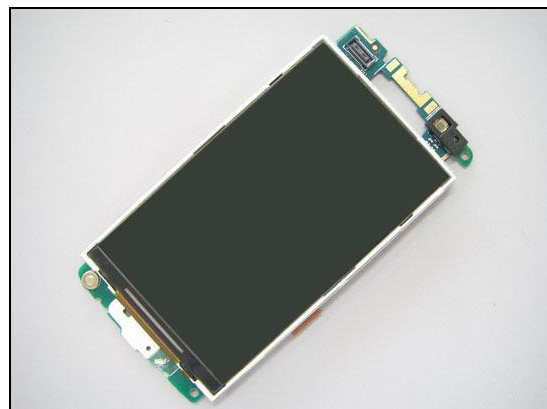
Lock the connector by using the Flex Film Assembly Tool.



Replacement: Display 3.0 inch TFT

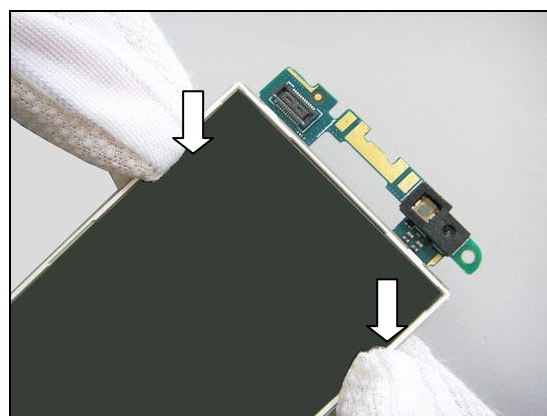
Carefully turn the upper Board Assy over and place the Display on top of the Sub Board Assy.

Be careful not to damage the Display FPC!



Press to snap the two hooks of the Display.

Do not touch the screen!





Replacement

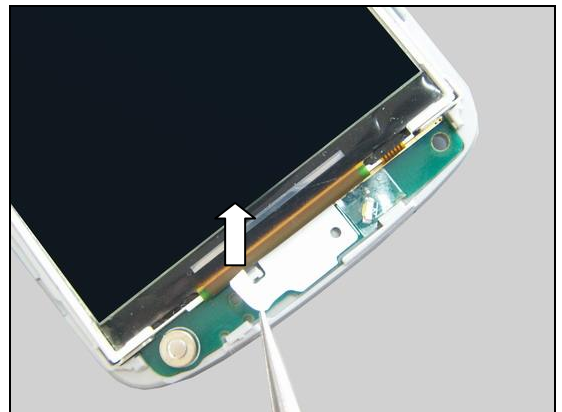
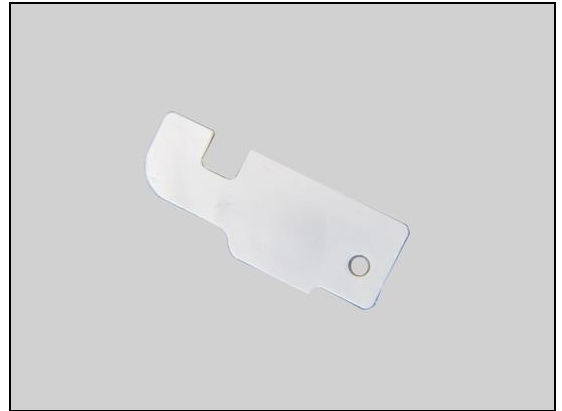
4.29 Metal Dome Home Key (Old)

Follow the 3.2.1 – 3.2.4 Disassembly Instructions!
Prepare the new Metal Dome Home Key.
Follow the 5.1.1 – 5.1.4 Reassembly Instructions!

REMOVAL

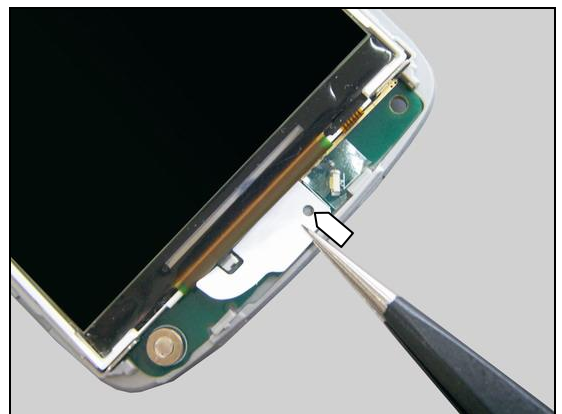
Detach the Metal Dome Home Key from Sub Board Assy.

Scrap! Cannot be reused!

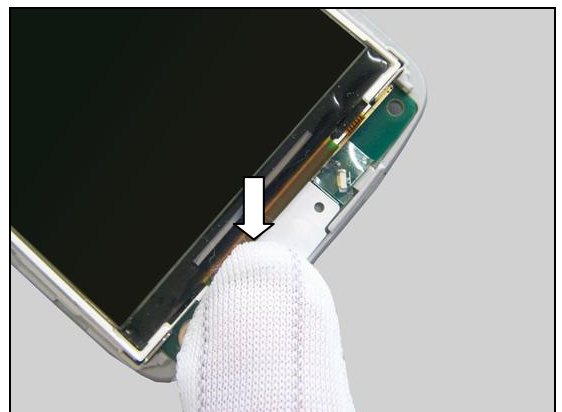


INSTALLATION

Attach a new Metal Dome Home Key in alignment with the guiding line and guiding holes as pointers indicated in picture.



Use fingers to press to make it securely attached.



Replacement

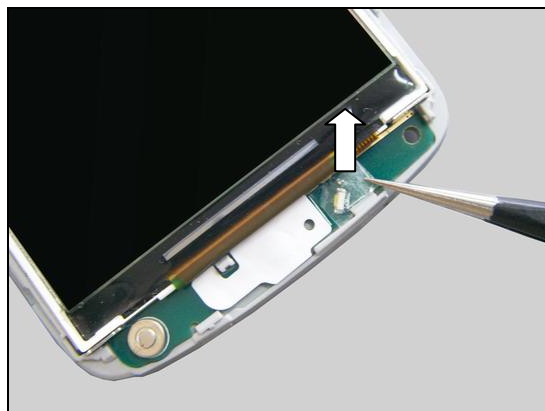
4.30 Mylar Home Key LED

Follow the 3.2.1 – 3.2.4 Disassembly Instructions!
 Prepare the new Mylar Home Key LED.
Follow the 5.1.1 – 5.1.4 Reassembly Instructions!

REMOVAL

Detach the Mylar Home Key LED from Sub Board Assy.

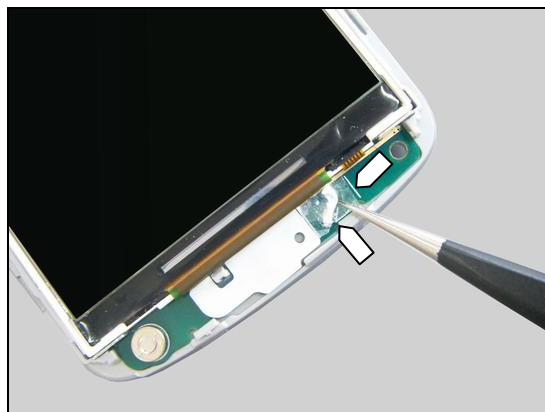
Scrap! Cannot be reused!



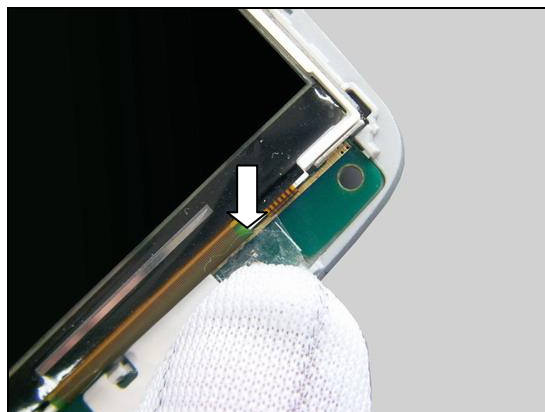
INSTALLATION

Attach a new Mylar Home Key LED in alignment with the guiding frame as pointers indicated in picture.

Be careful not to damage the components on Sub Board Assy!



Use fingers to press to make it securely attached.





Replacement

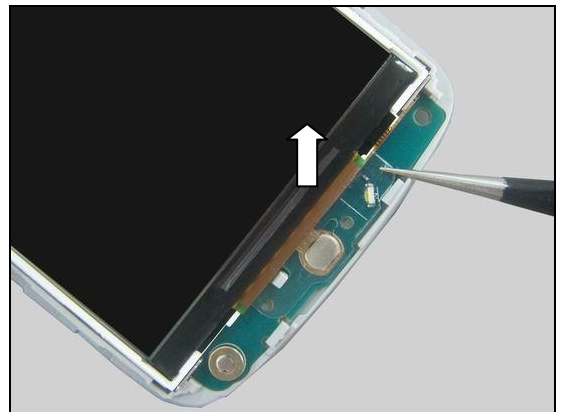
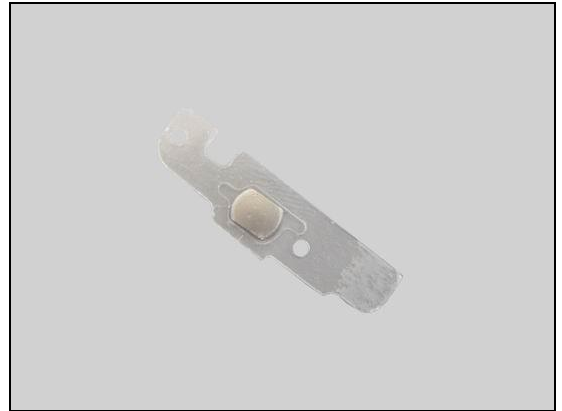
4.31 Metal Dome Home Key (New)

Follow the 3.2.1 – 3.2.4 Disassembly Instructions!
Prepare the new Metal Dome Home Key.
Follow the 5.1.1 – 5.1.4 Reassembly Instructions!

REMOVAL

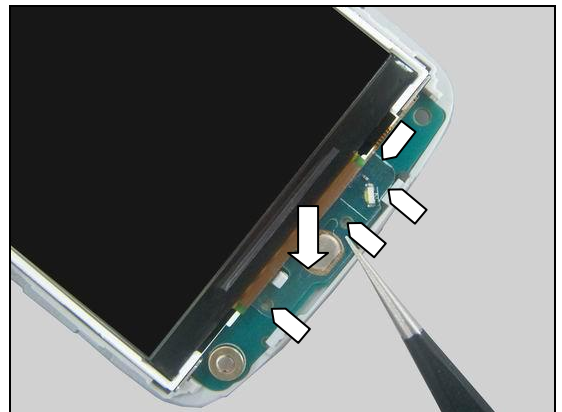
Detach the Metal Dome Home Key from Sub Board Assy.

Scrap! Cannot be reused!

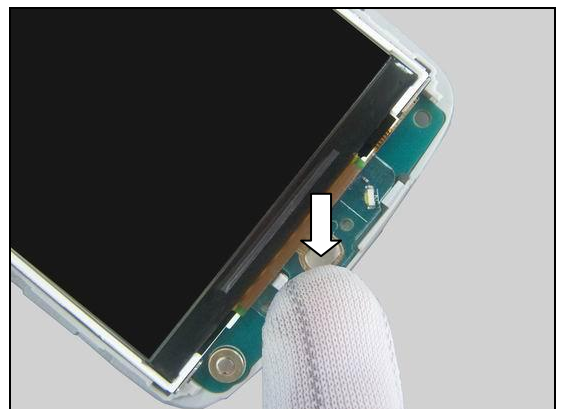


INSTALLATION

Attach a new Metal Dome Home Key in alignment with the guiding lines and guiding holes as pointers indicated in picture.



Use fingers to press to make it securely attached.



Replacement

4.32 Conductive Gasket 3x4x0.5mm

Follow the 3.2.1 – 3.2.4 Disassembly Instructions!
Follow the 4.23 Removal Instructions!
 Prepare the new Conductive Gasket 3x4x0.5mm.
Follow the 4.23 Installation Instructions!
 Follow the 5.1.1 – 5.1.4 Reassembly Instructions!

REMOVAL

Peel off the two Conductive Gaskets 3x4x0.5mm from Sub Board Assy by using the Flex Film Assembly Tool.

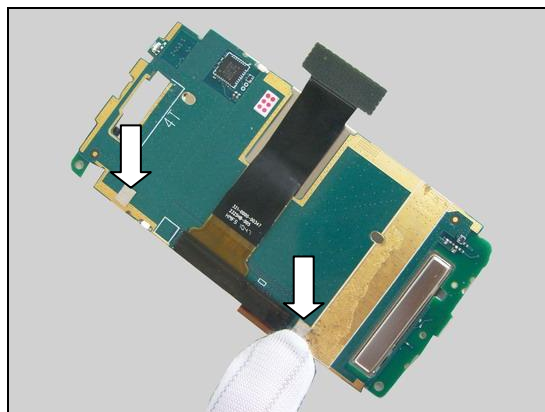
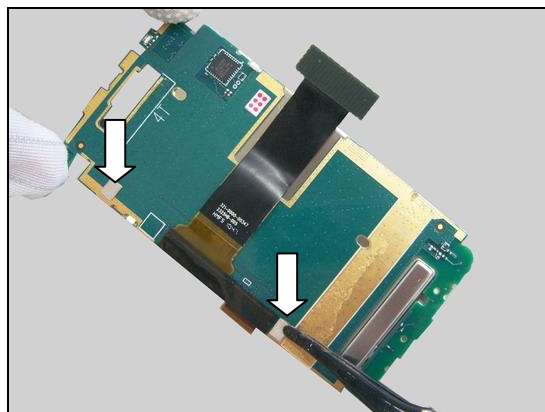
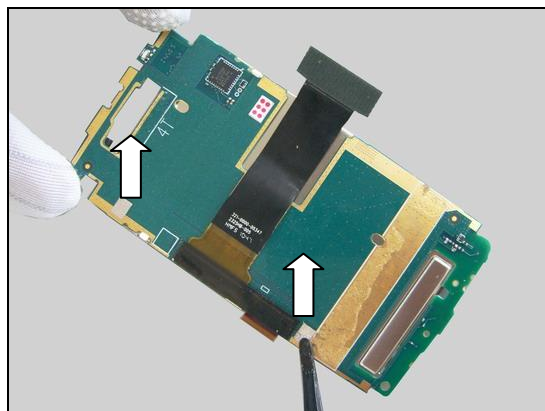
Scrap! Cannot be reused!

INSTALLATION

Attach a new Conductive Gasket 3x4x0.5mm as shown in picture.

Do the same with the other one.

Press to make them securely attached.



Replacement

4.33 Conductive Tape 3.5*17.5mm

Follow the 3.2.1 – 3.2.4 Disassembly Instructions!
Follow the 4.23, 4.25, 4.26, 4.27 Removal Instructions!
 Prepare the Conductive Tape 3.5*17.5mm.
Follow the 4.27, 4.26, 4.25, 4.23 Installation Instructions!
Follow the 5.1.1 – 5.1.4 Reassembly Instructions!

REMOVAL

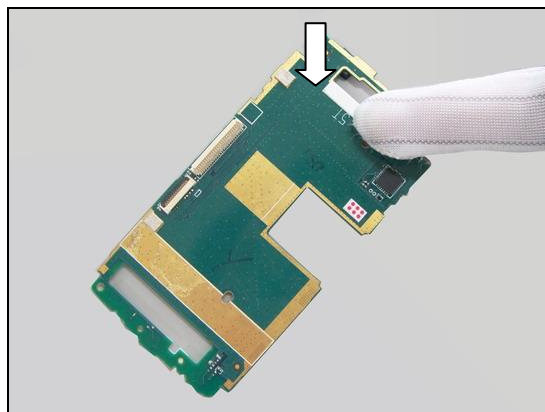
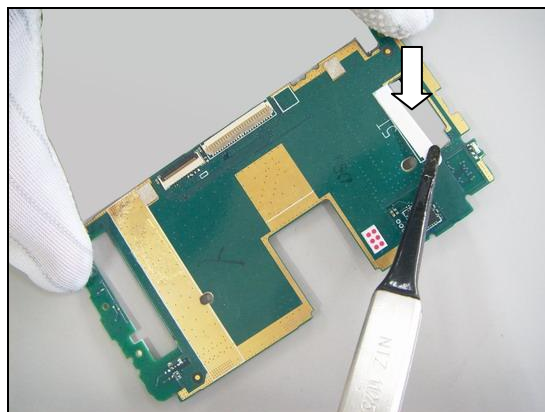
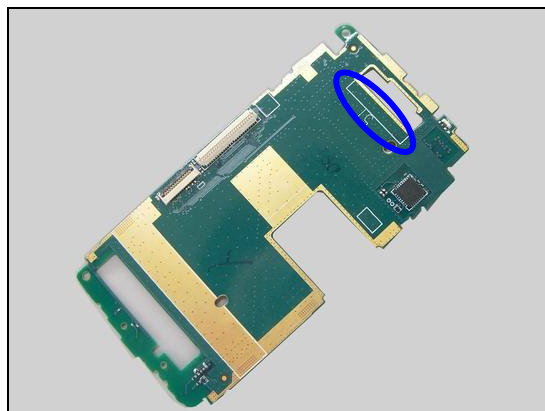
Erase the Conductive Tape 7.6*43.2mm on the Sub Board Assy with some Isopropyl Alcohol – 99%.

Not to damage the opposite components when remove the residue adhesive!

INSTALLATION

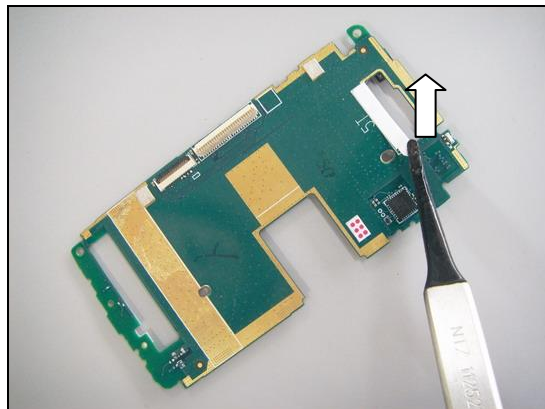
Attach a new Conductive Tape 3.5*17.5mm in alignment with the guiding frame as pointers indicated in picture.

Press to make it securely attached.



Replacement: Conductive Tape 3.5*17.5mm

Peel off the protection paper.





Replacement:

4.34 Conductive Tape 7.6*43.2mm

Follow the 3.2.1 – 3.2.4 Disassembly Instructions!
Follow the 4.23&4.25, 4.26, 4.27 Removal Instructions!
Prepare the Conductive Tape 7.6*43.2mm .
Follow the 4.27&4.26, 4.25, 4.23 Installation Instructions!
Follow the 5.1.1 – 5.1.4 Reassembly Instructions!

REMOVAL

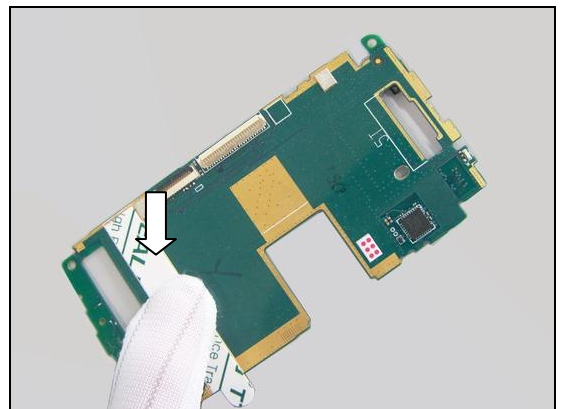
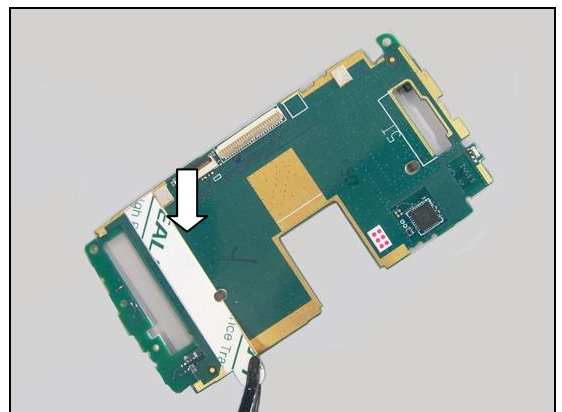
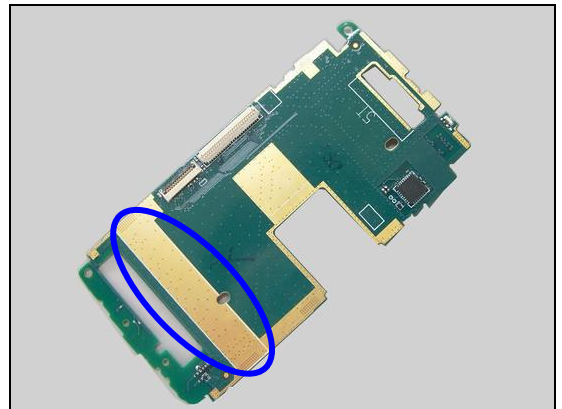
Erase the Conductive Tape 7.6*43.2mm on the Sub Board Assy with some Isopropyl Alcohol – 99%.

Not to damage the opposite components when remove the residue adhesive!

INSTALLATION

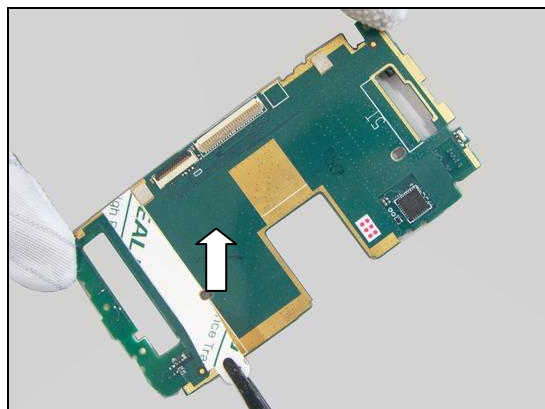
Attach a new Conductive Tape 7.6*43.2mm in alignment with the guiding frame as pointers indicated in picture.

Press to make it securely attached.



Replacement: Conductive Tape 7.6*43.2mm

Peel off the protection paper.



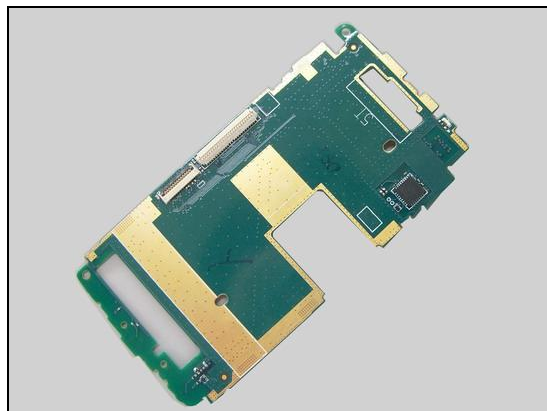
Replacement:**4.35 Sub PBA Assy**

Follow the 3.2.1 – 3.2.4 Disassembly Instructions!
Follow the 4.17, 4.22, 4.23&4.25 – 4.33 Removal Instructions!

Prepare the new Sub PBA Assy.

Follow the 4.33 – 4.25&4.23, 4.22, 4.17 Installation Instructions!

Follow the 5.1.1 – 5.1.4 Reassembly Instructions!





5 Reassembly

5.1 Upper Unit

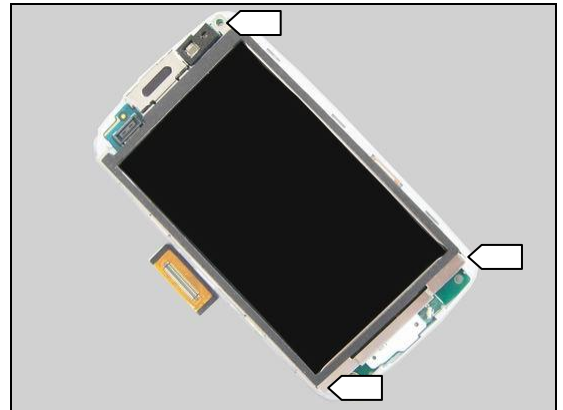
The reassembly is done in the following order:

1. Upper Board Assy and Display Shielding Assy
2. Front Cover Assy
3. Battery
4. Battery Cover

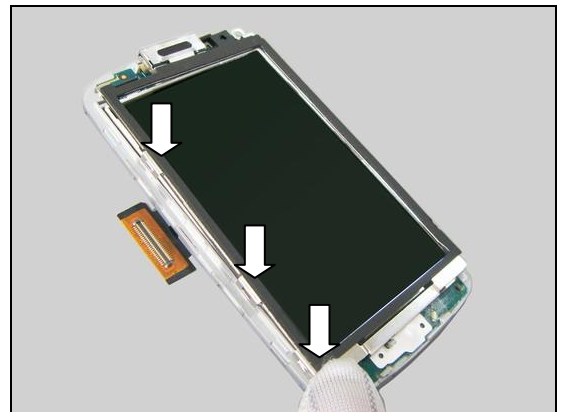


5.1.1 Upper Board Assy and Display Shielding Assy

Place the Display Shielding Assy aligning the screw hole and two guiding pins as shown in picture.



Press to snap the hooks of this side as shown.

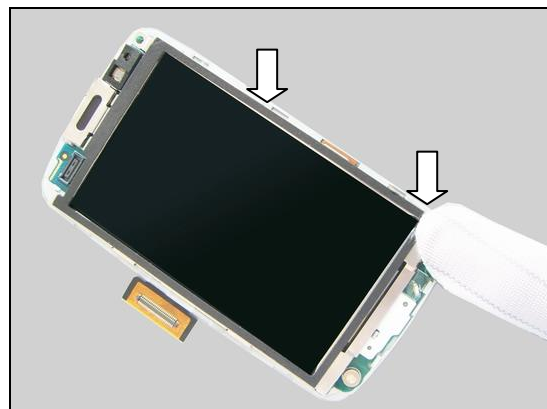


Do the same at the bottom side.

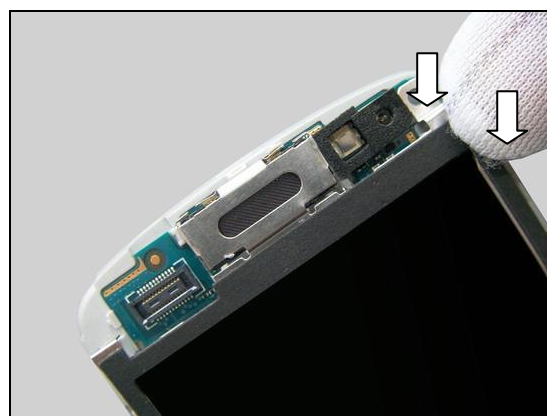


Reassembly: Upper Unit

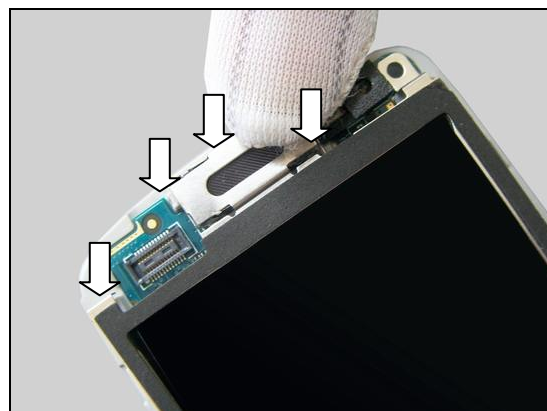
Do the same for the right side.



Do the same for the top-right corner.



Do the same for the top side.



5.1.2 Front Cover Assy

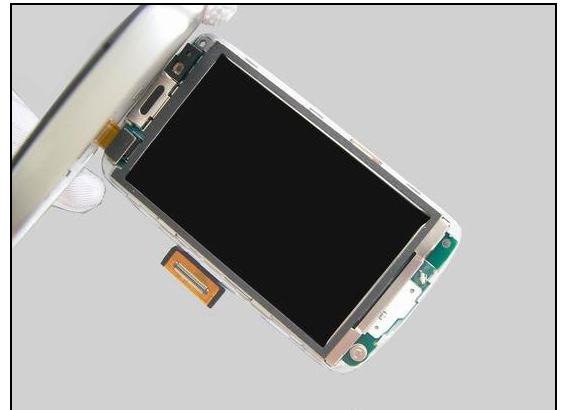
Prepare Front Cover Assy and Upper Board Assy



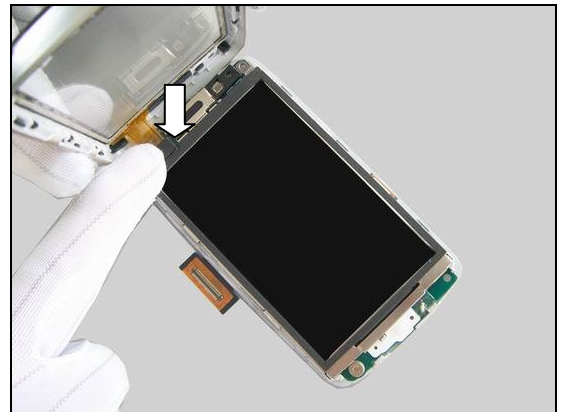


Reassembly: Upper Unit

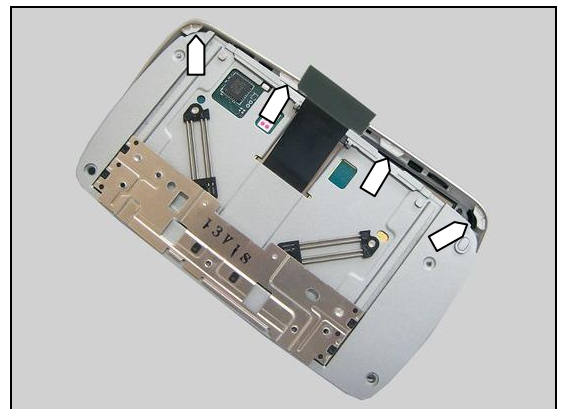
Hold the Front Cover Assy in the position at an approximate 80 degree as shown in picture.



Press to snap the BtB connector by the fingers.

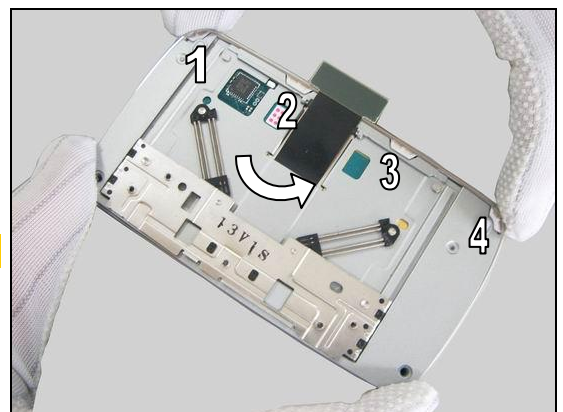


Align the Upper Board Assy with the Front Cover Assy as the four arrows indicated in picture.



Insert the Upper Board Assy under the four hooks of Front Cover Assy following the order as shown in the picture.

Make sure the four hooks are properly snapped.

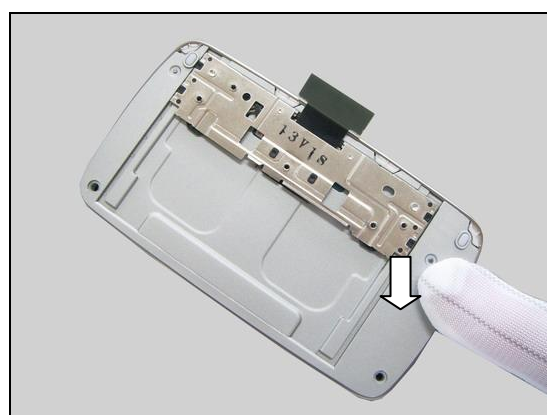


Reassembly: Upper Unit

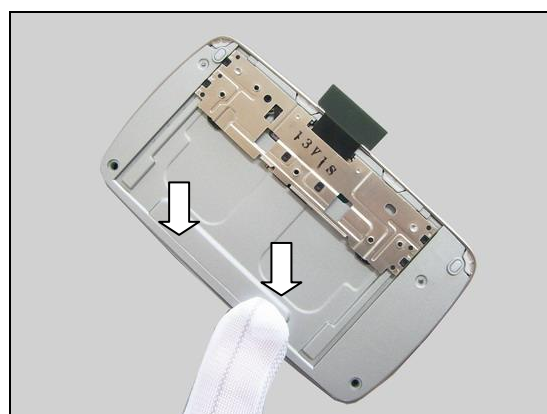
Push the Hinge Assy as shown in picture.



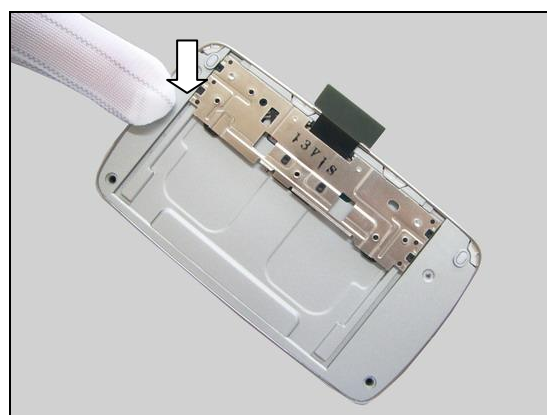
Press to snap the hooks.



Do the same for the left side.



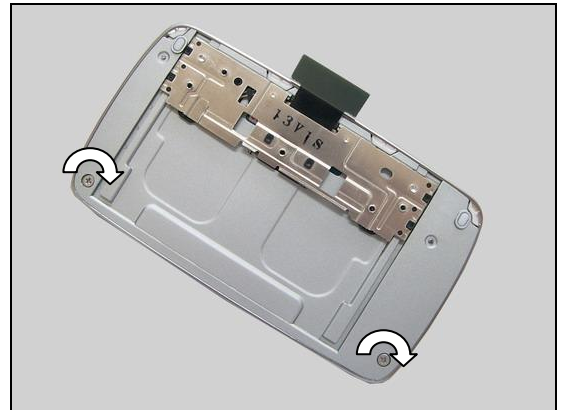
Do the same for the top side.



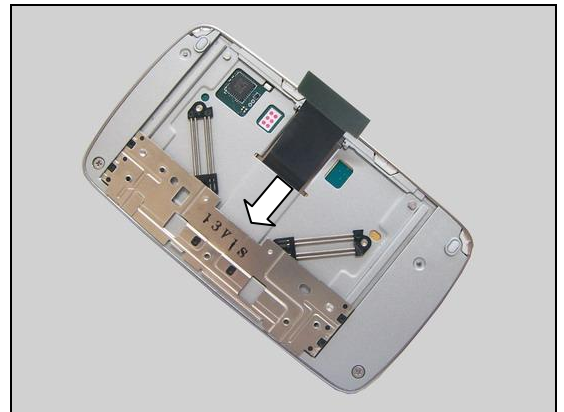


Reassembly: Upper Unit

Tighten the two screws with a screwdriver by using JCIS No.0 Bits to a torque of 8 Ncm.



Push the Hinge Assy as shown in picture.



Prepare Lower Unit and Upper Unit.



Hold the Upper Unit in the position at an approximate 60 degree, and put the Hinge FPC connector in place as shown in picture.

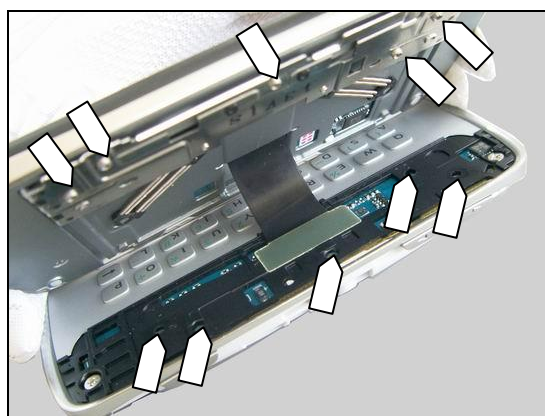


Reassembly: Upper Unit

Press to snap the BtB connector by using the fingers.



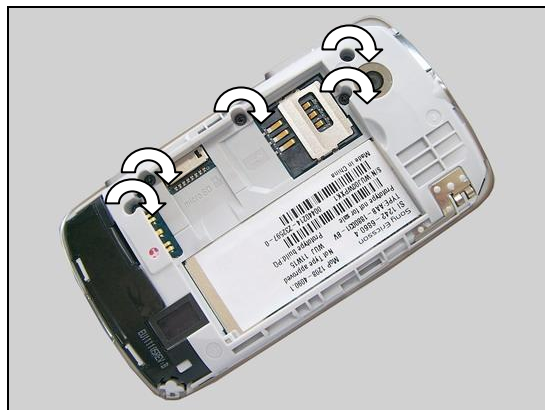
Place the Upper Unit on to the Lower Unit aligning to the five screw holes as pointers indicated in picture.



Turn over upper Unit and lower Unit together.



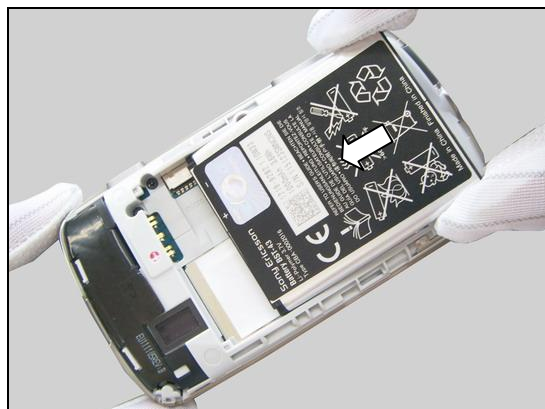
Tighten the five screws with a screwdriver by using Torx Bits T5 to a torque of 8 Ncm.



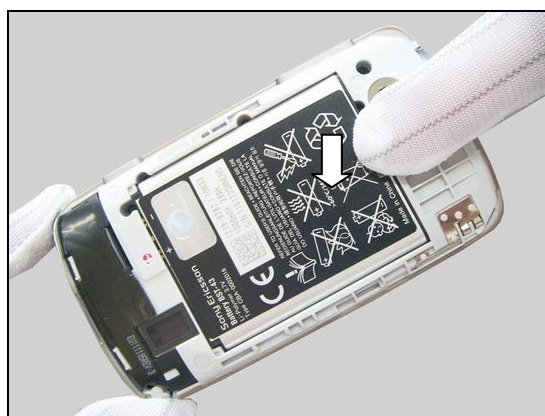
Reassembly: Upper Unit

5.1.3 Battery

Insert the Battery in its cavity as shown in picture.

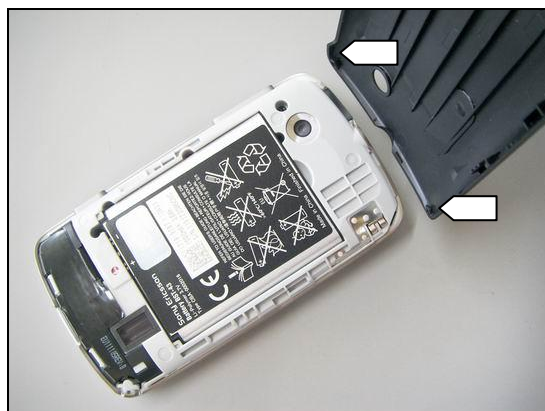


Press the bottom of battery to secure its position.



5.1.4 Battery Cover

There are two snap hooks as the arrows indicated in picture.



Insert (1) the two hooks on the Battery Cover and close (2) the Battery Cover in the direction of the arrow.



Reassembly: Upper Unit

Press to secure the battery cover as show in picture.



Reassembly

5.2 Lower Unit

The reassembly is done in the following order:

1. Main PBA Assy(a) and Cover Plastic(b)
2. Rear Cover Assy
3. Keyboard
4. Battery
5. Battery Cover

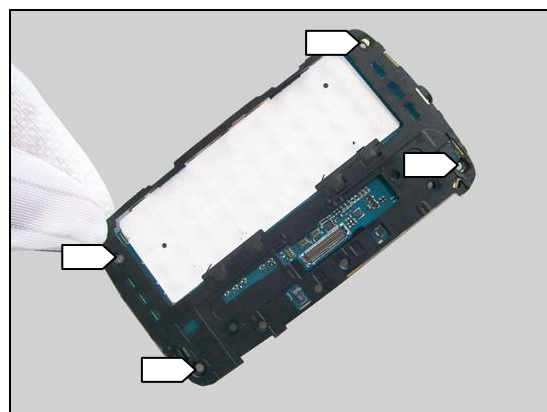


5.2.1 Main PBA Assy and Cover Plastic

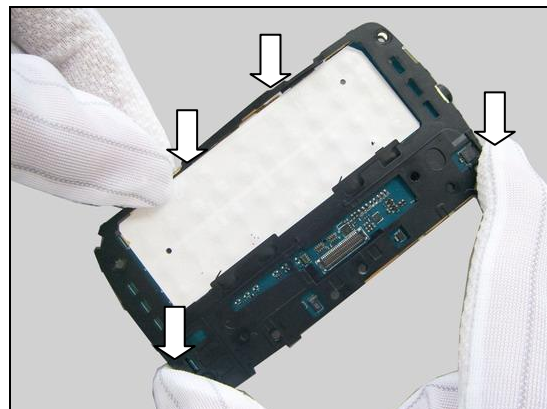
Prepare the Main PBA Assy and Cover Plastic.



Place the Cover Plastic on the Main PBA Assy in alignment with the four screw holes as shown in picture.



Press to snap both sides of the Cover Plastic onto the Main PBA Assy as shown in picture.





Reassembly: Lower Unit

5.2.2 Rear Cover Assy

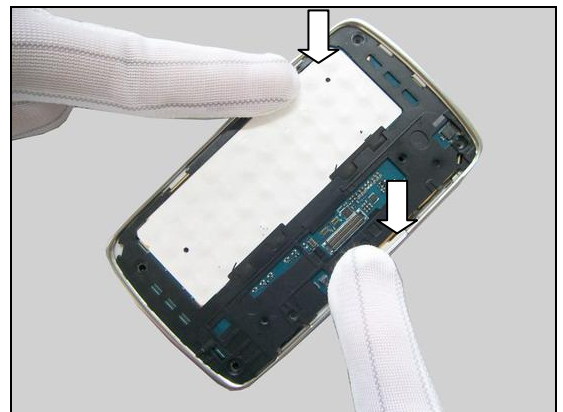
Hold the Main PBA Assy in a slight angle and insert the top of the Main PBA Assy into the Rear Cover Assy as indicated by the pointer and arrow in picture.



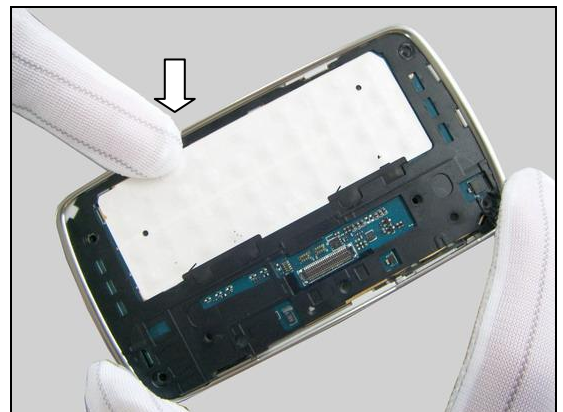
Make sure the two hooks proper snapped!



Press on both sides of the Main PBA Assy to secure it into the Rear Cover Assy as shown in picture.



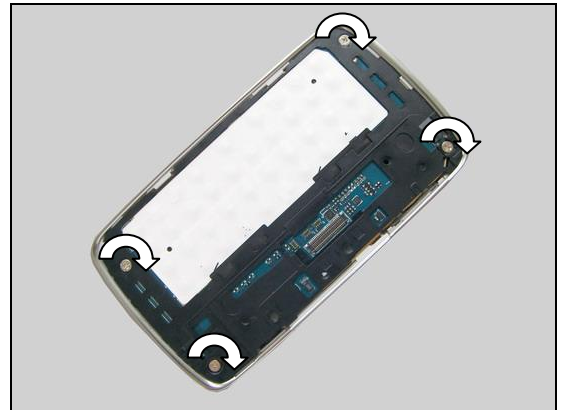
Press with fingers to snap the hook as shown in picture.





Reassembly: Lower Unit

Tighten the four screws with a screwdriver by using JCIS No.0 Bits to a torque of 9 Ncm



5.2.3 Keyboard

Attach the Keyboard along the frame lines on the Cover Plastic as shown in picture.



Press the Keyboard to make it securely attached as shown in picture.

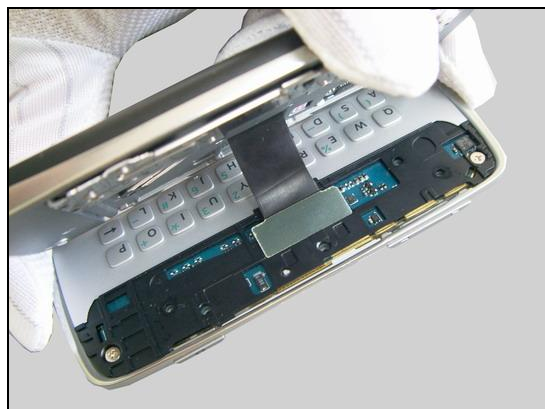


Prepare lower Unit and upper Unit.



Reassembly: Lower Unit

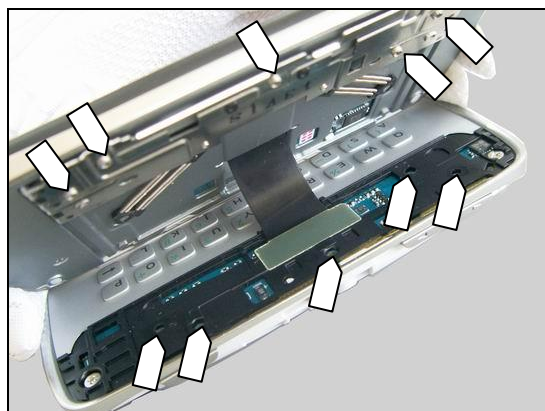
Hold the Upper Unit in the position at an approximate 60 degree, and Put the Hinge FPC connector in place as shown in picture.



Press to snap the BtB connector by using the fingers



Place the Upper Unit on to the Lower Unit aligning to the five screw holes as pointers indicated in picture



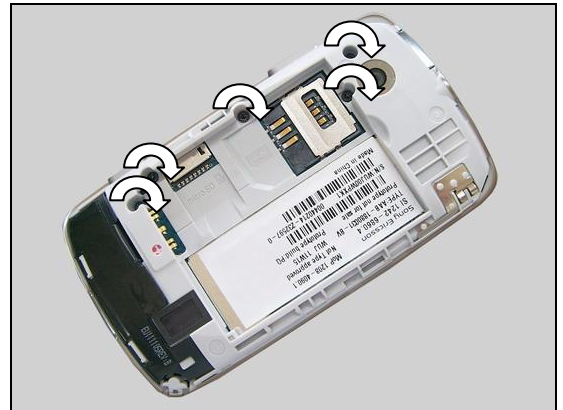
Turn over upper Unit and lower Unit together.





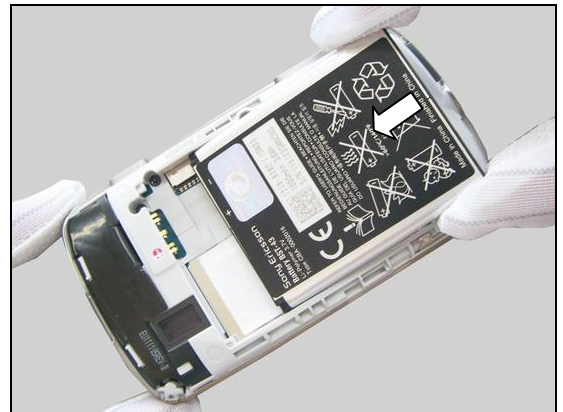
Reassembly: Lower Unit

Tighten the five screws with a screwdriver by using Torx Bits T5 to a torque of 8 Ncm.

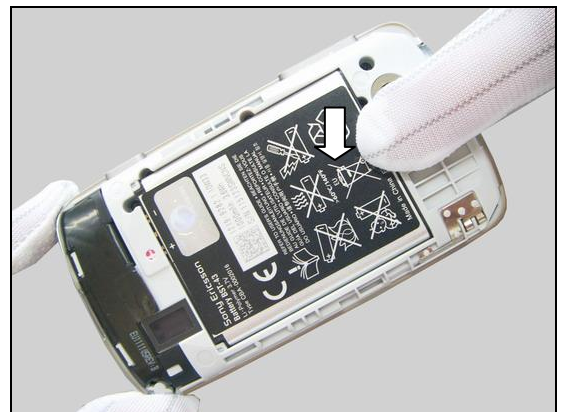


5.2.4 Battery

Insert the Battery in its cavity as shown in picture.

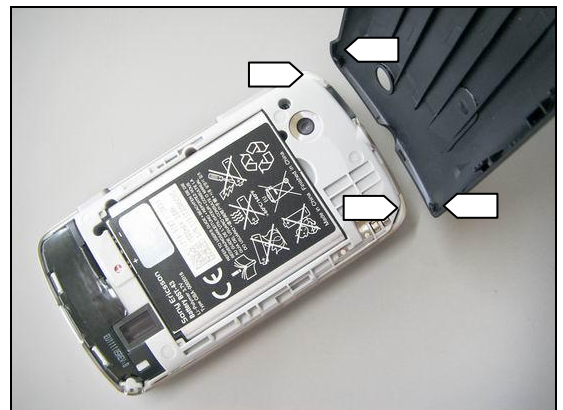


Press the bottom of battery to secure its position.



5.2.5 Battery Cover

There are two snap hooks securing Battery Cover onto the Rear Cover Assy as shown in the picture.



Reassembly: Lower Unit

Insert (1) the two hooks of the Battery Cover into the two holes on the Rear Cover Assy. And close (2) the Battery Cover in the direction of the arrow.



Press to secure the snap hooks as indicated by the pointers in picture.





6 Revision History

Rev.	Date	Changes / Comments
1	2011-Jun-24	Initial release
2	2011-Aug-22	Add new metal dome home key replacement section
3	2011-Oct-12	Add calibration request after reassembly front cover to fix P-sensor issue